

Product datasheet for **TA329504**

G protein alpha S (GNAS) Rabbit Polyclonal Antibody

Product data:

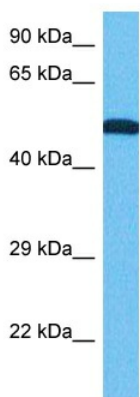
Product Type:	Primary Antibodies
Recommended Dilution:	WB, IHC
Reactivity:	Human
Host:	Rabbit
Isotype:	IgG
Clonality:	Polyclonal
Immunogen:	The immunogen for anti-GNAS antibody: synthetic peptide directed towards the N terminal of human GNAS. Synthetic peptide located within the following region: VYRATHRLLLLLGAGESGKSTIVKQMRILHVNGFNGEGGEDPQAARSNSD
Formulation:	Liquid. Purified antibody supplied in 1x PBS buffer with 0.09% (w/v) sodium azide and 2% sucrose. <i>Note that this product is shipped as lyophilized powder to China customers.</i>
Conjugation:	Unconjugated
Storage:	Store at -20°C as received.
Stability:	Stable for 12 months from date of receipt.
Predicted Protein Size:	46 kDa
Gene Name:	GNAS complex locus
Database Link:	NP_000507 Entrez Gene 2778 Human P84996



[View online »](#)

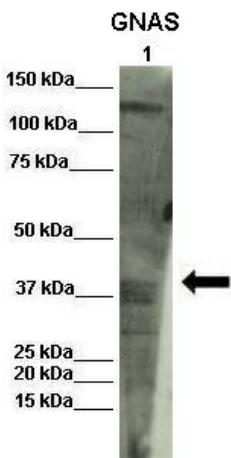
Background:	Mutations in GNAS gene result in pseudohypoparathyroidism type 1a, pseudohypoparathyroidism type 1b, Albright hereditary osteodystrophy, pseudopseudohypoparathyroidism, McCune-Albright syndrome, progressive osseus heteroplasia, polyostotic fibrous dysplasia of bone, and some pituitary tumors. This locus has a highly complex imprinted expression pattern. It gives rise to maternally, paternally, and biallelically expressed transcripts that are derived from four alternative promoters and 5' exons. Some transcripts contains a differentially methylated region (DMR) at their 5' exons, and this DMR is commonly found in imprinted genes and correlates with transcript expression. An antisense transcript exists, and this antisense transcript and one of the transcripts are paternally expressed, produce noncoding RNAs, and may regulate imprinting in this region. In addition, one of the transcripts contains a second overlapping ORF, which encodes a structurally unrelated protein - Alex. Alternative splicing of downstream exons is also observed, which results in different forms of the stimulatory G-protein alpha subunit, a key element of the classical signal transduction pathway linking receptor-ligand interactions with the activation of adenylyl cyclase and a variety of cellular reponses. Multiple transcript variants have been found for this gene, but the full-length nature and/or biological validity of some variants have not been determined. Mutations in this gene result in pseudohypoparathyroidism type 1a, pseudohypoparathyroidism type 1b, Albright hereditary osteodystrophy, pseudopseudohypoparathyroidism, McCune-Albright syndrome, progressive osseus heteroplasia, polyostotic fibrous dysplasia of bone, and some pituitary tumors.
Synonyms:	AHO; C20orf45; GNAS1; GPSA; GSA; GSP; NESP; PHP1A; PHP1B; PHP1C; POH; SgVI
Note:	Immunogen sequence homology: Dog: 100%; Pig: 100%; Rat: 100%; Horse: 100%; Human: 100%; Mouse: 100%; Bovine: 100%; Guinea pig: 100%; Rabbit: 93%
Protein Families:	Druggable Genome, Secreted Protein
Protein Pathways:	Calcium signaling pathway, Dilated cardiomyopathy, Gap junction, GnRH signaling pathway, Long-term depression, Melanogenesis, Taste transduction, Vascular smooth muscle contraction, Vibrio cholerae infection

Product images:



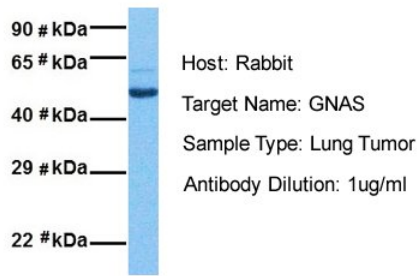
Host: Rabbit
 Target Name: GNAS
 Sample Type: Jurkat Cell Lysate
 Antibody Dilution: 1.0µg/ml

Host: Rabbit
 Target Name: GNAS
 Sample Tissue: Human Jurkat Whole Cell
 Antibody Dilution: 1ug/ml

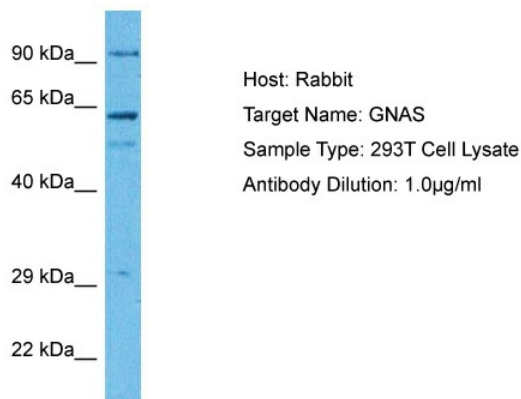


Lane 1: INS1 lysate
 Primary Antibody Dilution: 1:1000
 Secondary Antibody: Donkey anti-rabbit-HRP
 Secondary Antibody Dilution: 1:1000
 Gene Name: GNAS
 Submitted by: Olivier Costa, Diabetes research center VUB

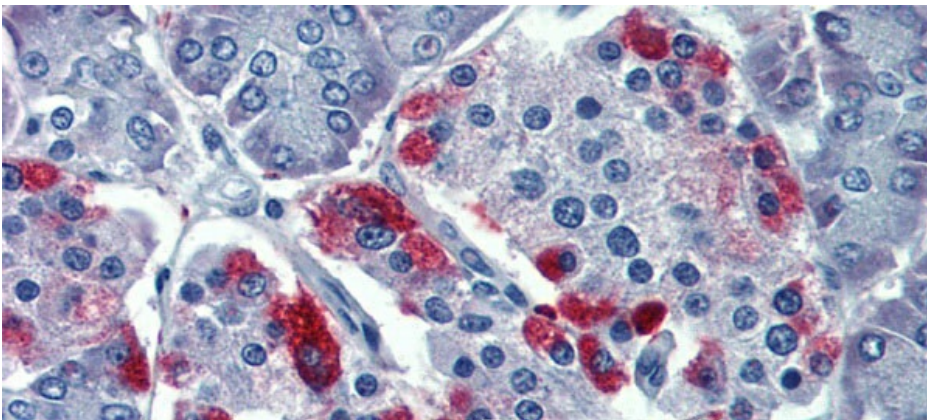
GNAS



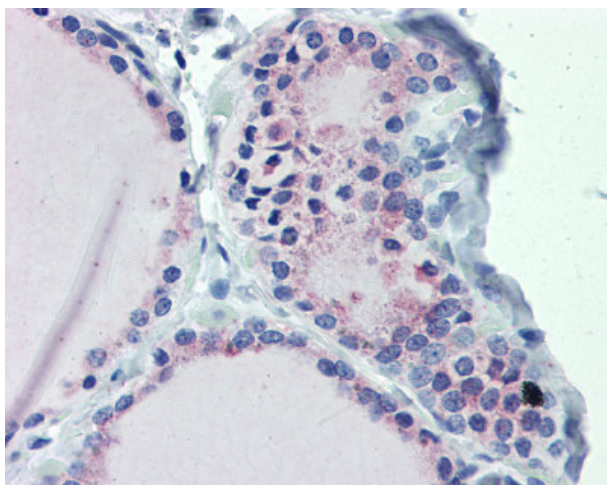
Host: Rabbit
Target Name: GNAS
Sample Tissue: Human Lung Tumor
Antibody Dilution: 1.0ug/ml



Host: Rabbit
Target Name: GNAS
Sample Tissue: Human 293T Whole Cell
Antibody Dilution: 1ug/ml



Rabbit Anti-GNAS Antibody
Catalog Number: arp42693
Paraffin Embedded Tissue: Human Pancreas
Antibody Concentration: 5 ug/ml



Anti-GNAS antibody IHC staining of human thyroid. Immunohistochemistry of formalin-fixed, paraffin-embedded tissue after heat-induced antigen retrieval. Antibody concentration 5 ug/ml.