

Product datasheet for **TA329503**

NIBAN1 Rabbit Polyclonal Antibody

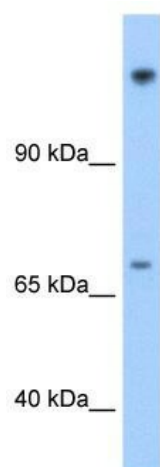
Product data:

| | |
|--------------------------------|-------------------------------------------------------------------------------------------------------------------------------------------------------------------------------------------------------------------------|
| Product Type: | Primary Antibodies |
| Applications: | WB |
| Recommended Dilution: | WB |
| Reactivity: | Human |
| Host: | Rabbit |
| Isotype: | IgG |
| Clonality: | Polyclonal |
| Immunogen: | The immunogen for anti-FAM129A antibody: synthetic peptide directed towards the N terminal of human FAM129A. Synthetic peptide located within the following region: SYENKEAYQRGAAPKCRILPAGGKVLTSSEDEYNLLSDRHFDPPLASSEKE |
| Formulation: | Liquid. Purified antibody supplied in 1x PBS buffer with 0.09% (w/v) sodium azide and 2% sucrose. <i>Note that this product is shipped as lyophilized powder to China customers.</i> |
| Conjugation: | Unconjugated |
| Storage: | Store at -20°C as received. |
| Stability: | Stable for 12 months from date of receipt. |
| Predicted Protein Size: | 103 kDa |
| Gene Name: | family with sequence similarity 129 member A |
| Database Link: | NP_443198 Entrez Gene 116496 Human Q9BZQ8 |
| Background: | FAM129A is expressed in subsets of thyroid tumors and Hashimoto's thyroiditis and it is a novel tumor marker. |
| Synonyms: | C1orf24; GIG39; NIBAN |
| Note: | Immunogen sequence homology: Human: 100%; Dog: 86%; Pig: 86%; Rat: 86%; Horse: 86%; Bovine: 86%; Rabbit: 86%; Mouse: 85%; Guinea pig: 79% |



[View online »](#)

Product images:



WB Suggested Anti-FAM129A Antibody Titration:
1.25 ug/ml; Positive Control: Transfected 293T