

Product datasheet for **TA329501**

Granzyme H (GZMH) Rabbit Polyclonal Antibody

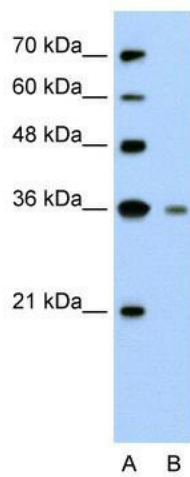
Product data:

Product Type:	Primary Antibodies
Applications:	IHC, WB
Recommended Dilution:	WB, IHC
Reactivity:	Human
Host:	Rabbit
Isotype:	IgG
Clonality:	Polyclonal
Immunogen:	The immunogen for anti-GZMH antibody: synthetic peptide directed towards the N terminal of human GZMH. Synthetic peptide located within the following region: MQPFLLLLAFLLTPGAGTEEIIGGHEAKPHSRPYMAFVQFLQEKSRRKCG
Formulation:	Liquid. Purified antibody supplied in 1x PBS buffer with 0.09% (w/v) sodium azide and 2% sucrose. <i>Note that this product is shipped as lyophilized powder to China customers.</i>
Conjugation:	Unconjugated
Storage:	Store at -20°C as received.
Stability:	Stable for 12 months from date of receipt.
Predicted Protein Size:	27 kDa
Gene Name:	granzyme H
Database Link:	NP_219491 Entrez Gene 2999 Human P20718
Background:	This enzyme is probably necessary for target cell lysis in cell-mediated immune responses.
Synonyms:	CCP-X; CGL-2; CSP-C; CTLA1; CTSG2
Note:	Immunogen sequence homology: Human: 100%; Rat: 92%; Mouse: 91%; Horse: 85%
Protein Families:	Druggable Genome, Protease

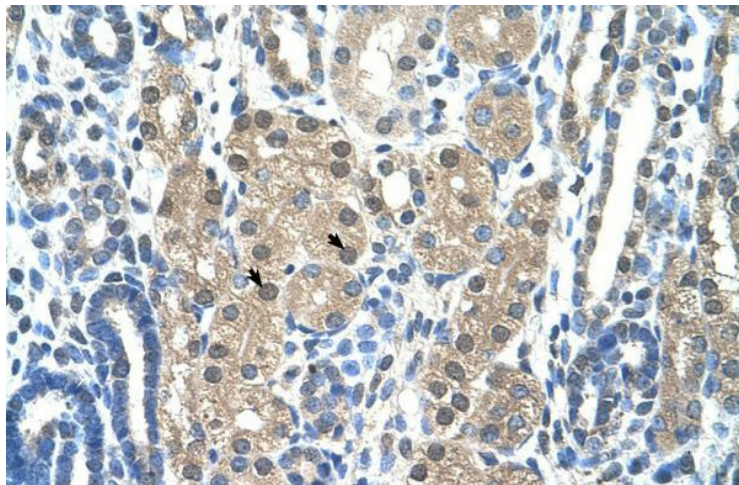


[View online »](#)

Product images:



WB Suggested Anti-GZMH Antibody Titration: 2.5 ug/ml; Positive Control: Jurkat cell lysate



Human kidney