

Product datasheet for **TA329500**

SYDE1 Rabbit Polyclonal Antibody

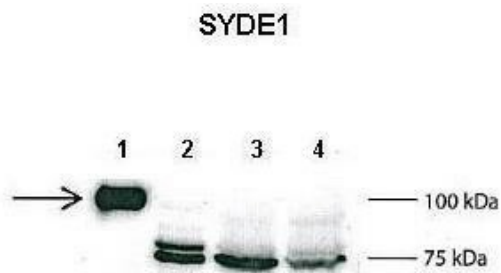
Product data:

Product Type:	Primary Antibodies
Applications:	WB
Recommended Dilution:	WB
Reactivity:	Human
Host:	Rabbit
Isotype:	IgG
Clonality:	Polyclonal
Immunogen:	The immunogen for anti-SYDE1 antibody: synthetic peptide directed towards the C terminal of human SYDE1. Synthetic peptide located within the following region: PYLRPKRQPPLHLPLADPEVTRPRGRGGPESPPSNRYAGDWSVCGRDFL
Formulation:	Liquid. Purified antibody supplied in 1x PBS buffer with 0.09% (w/v) sodium azide and 2% sucrose.
Conjugation:	Unconjugated
Storage:	Store at -20°C as received.
Stability:	Stable for 12 months from date of receipt.
Predicted Protein Size:	80 kDa
Gene Name:	synapse defective Rho GTPase homolog 1
Database Link:	NP_149014 Entrez Gene 85360 Human Q6ZW31
Background:	SYDE1 contains 1 Rho-GAP domain. It is a GTPase activator for the Rho-type GTPases by converting them to an inactive GDP-bound state.
Synonyms:	7h3; SYD1
Note:	Immunogen sequence homology: Dog: 100%; Pig: 100%; Rat: 100%; Horse: 100%; Human: 100%; Mouse: 100%; Bovine: 100%; Rabbit: 100%; Guinea pig: 100%



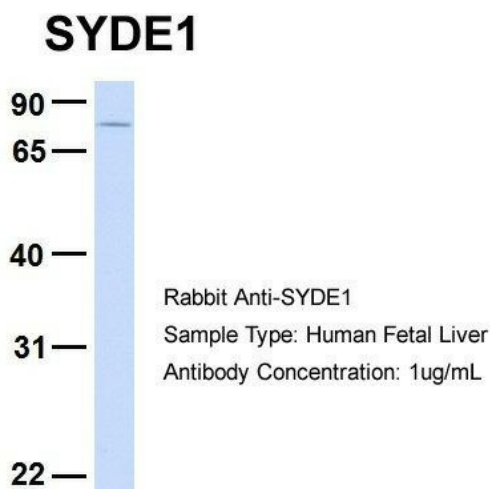
[View online »](#)

Product images:

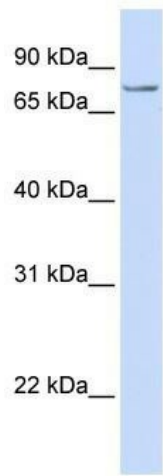


Lanes: 1: 2ug mouse SYDE1 transfected HEK293T lysate, 2: 15 ug untransfected HEK293T lysate, 3: 100ug wild type mouse brain lysate, 4: 100ug SYDE1 knock-out mouse brain lysate; Primary Antibody Dilution: 1:500; Secondary Antibody: Anti-rabbit L-chain HRP; Secondary Antibody Dilution: 1:10,000; Gene Name: SYDE1; Submitted by: Anonymous;

See Immunoblot 2 Data and customer Feedback for more Information

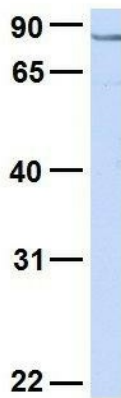


Host: Rabbit; Target Name: SYDE1; Sample Tissue: Human Fetal Liver; Antibody Dilution: 1.0ug/ml



WB Suggested Anti-SYDE1 Antibody Titration: 0.2-1 ug/ml; ELISA Titer: 1:312500; Positive Control: HeLa cell lysate SYDE1 is supported by BioGPS gene expression data to be expressed in HeLa

SYDE1



Rabbit Anti-SYDE1
Sample Type: Human HeLa
Antibody Concentration: 1ug/mL

Host: Rabbit; Target Name: SYDE1; Sample Tissue: HeLa; Antibody Dilution: 1.0ug/ml; SYDE1 is supported by BioGPS gene expression data to be expressed in HeLa