

## Product datasheet for **TA329499**

### **SYDE1 Rabbit Polyclonal Antibody**

#### **Product data:**

<b>Product Type:</b>	Primary Antibodies
<b>Applications:</b>	WB
<b>Recommended Dilution:</b>	WB
<b>Reactivity:</b>	Human
<b>Host:</b>	Rabbit
<b>Isotype:</b>	IgG
<b>Clonality:</b>	Polyclonal
<b>Immunogen:</b>	The immunogen for anti-SYDE1 antibody: synthetic peptide directed towards the N terminal of human SYDE1. Synthetic peptide located within the following region: PSPPEPEPQAPEGSQAGAEGPSSPEASRSPARGAYLQSLEPSSRRWVLGG
<b>Formulation:</b>	Liquid. Purified antibody supplied in 1x PBS buffer with 0.09% (w/v) sodium azide and 2% sucrose.
<b>Conjugation:</b>	Unconjugated
<b>Storage:</b>	Store at -20°C as received.
<b>Stability:</b>	Stable for 12 months from date of receipt.
<b>Predicted Protein Size:</b>	80 kDa
<b>Gene Name:</b>	synapse defective Rho GTPase homolog 1
<b>Database Link:</b>	<a href="#">NP_149014</a> <a href="#">Entrez Gene 85360 Human</a> <a href="#">Q6ZW31</a>
<b>Background:</b>	SYDE1 contains 1 Rho-GAP domain. It is a GTPase activator for the Rho-type GTPases by converting them to an inactive GDP-bound state.
<b>Synonyms:</b>	7h3; SYD1
<b>Note:</b>	Immunogen sequence homology: Human: 100%; Bovine: 92%; Pig: 86%; Guinea pig: 86%; Rabbit: 85%; Dog: 79%; Rat: 79%



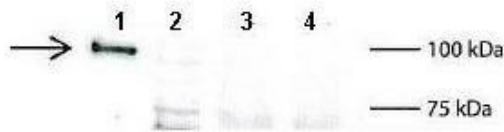
[View online »](#)

Product images:



SYDE1

WB Suggested Anti-SYDE1 Antibody Titration: 0.2-1 ug/ml; ELISA Titer: 1:12500; Positive Control: HepG2 cell lysate



Lanes: 1: 2ug mouse SYDE1 transfected HEK293T lysate, 2: 15 ug untransfected HEK293T lysate, 3: 100ug wild type mouse brain lysate, 4: 100ug SYDE1 knock-out mouse brain lysate; Primary Antibody Dilution: 1:500; Secondary Antibody: Anti-rabbit L-chain HRP; Secondary Antibody Dilution: 1:10,000; Gene Name: SYDE1; Submitted by: Anonymous;

See Immunoblot 2 Data and customer Feedback for more Information