

Product datasheet for **TA329498**

SLC44A4 Rabbit Polyclonal Antibody

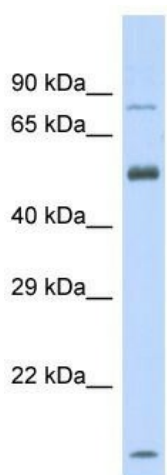
Product data:

Product Type:	Primary Antibodies
Applications:	WB
Recommended Dilution:	WB
Reactivity:	Human
Host:	Rabbit
Clonality:	Polyclonal
Immunogen:	The immunogen for Anti-SLC44A4 antibody is: synthetic peptide directed towards the middle region of Human SLC44A4. Synthetic peptide located within the following region: MMSTMFYPLVTFVLLLCIAYWAMTALYLATSGQPQYVLWASNISSPGCE
Formulation:	Liquid. Purified antibody supplied in 1x PBS buffer with 0.09% (w/v) sodium azide and 2% sucrose. <i>Note that this product is shipped as lyophilized powder to China customers.</i>
Conjugation:	Unconjugated
Storage:	Store at -20°C as received.
Stability:	Stable for 12 months from date of receipt.
Predicted Protein Size:	78 kDa
Gene Name:	solute carrier family 44 member 4
Database Link:	NP_001171515 Entrez Gene 80736 Human Q53GD3
Background:	The protein encoded by this gene may be a sodium-dependent transmembrane transport protein involved in the uptake of choline by cholinergic neurons. Defects in this gene can cause sialidosis, a lysosomal storage disease. Three transcript variants encoding different isoforms have been found for this gene.
Synonyms:	C6orf29; CTL4; NG22; TPPT
Note:	Immunogen sequence homology: Dog: 100%; Pig: 100%; Rat: 100%; Human: 100%; Rabbit: 100%; Guinea pig: 100%; Horse: 93%; Mouse: 93%; Bovine: 92%; Zebrafish: 85%
Protein Families:	Transmembrane



[View online »](#)

Product images:



Host: Rabbit

Target Name: SLC44A4

Sample Tissue: Fetal Heart Lysate

Antibody Dilution: 1.0 μ g/ml

Host: Rabbit; Target Name: SLC44A4; Sample Tissue: Fetal Heart lysates; Antibody Dilution: 1.0ug/ml