

Product datasheet for **TA329497**

ZGPAT Rabbit Polyclonal Antibody

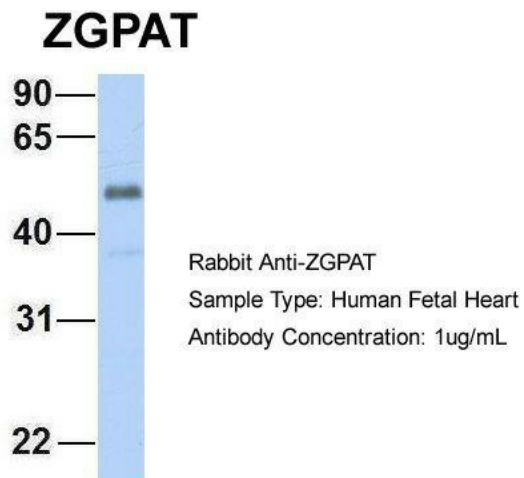
Product data:

| | |
|-------------------------|---|
| Product Type: | Primary Antibodies |
| Applications: | WB |
| Recommended Dilution: | WB |
| Reactivity: | Human |
| Host: | Rabbit |
| Isotype: | IgG |
| Clonality: | Polyclonal |
| Immunogen: | The immunogen for anti-ZGPAT antibody: synthetic peptide directed towards the C terminal of human ZGPAT. Synthetic peptide located within the following region: AGRHSVASAQLQEKLGAQRQLGQLRAQEAGLQQEQRKADTHKKMTEF |
| Formulation: | Liquid. Purified antibody supplied in 1x PBS buffer with 0.09% (w/v) sodium azide and 2% sucrose. <i>Note that this product is shipped as lyophilized powder to China customers.</i> |
| Conjugation: | Unconjugated |
| Storage: | Store at -20°C as received. |
| Stability: | Stable for 12 months from date of receipt. |
| Predicted Protein Size: | 57 kDa |
| Gene Name: | zinc finger CCCH-type and G-patch domain containing |
| Database Link: | NP_115916 Entrez Gene 84619 Human Q8N5A5 |
| Background: | ZGPAT contains 1 C3H1-type zinc finger and 1 G-patch domain. The function of the ZGPAT protein is not known. |
| Synonyms: | GPATC6; GPATCH6; KIAA1847; ZC3H9; ZC3HDC9; ZIP |
| Note: | Immunogen sequence homology: Horse: 100%; Human: 100%; Dog: 93%; Pig: 93%; Rat: 93%; Sheep: 93%; Bovine: 93%; Guinea pig: 93%; Mouse: 79%; Rabbit: 79% |

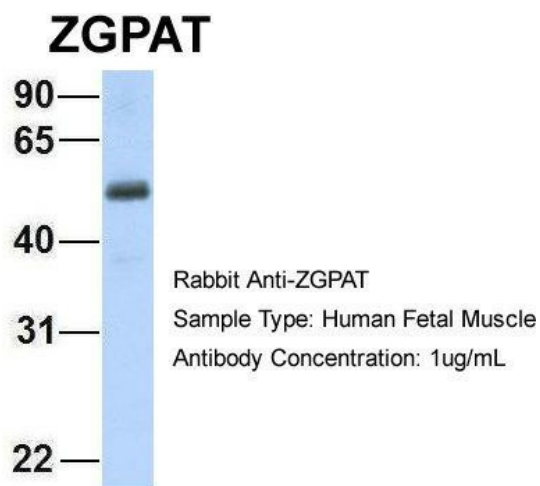


[View online »](#)

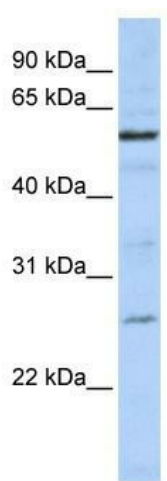
Product images:



Host: Rabbit; Target Name: ZGPAT; Sample Tissue: Human Fetal Heart; Antibody Dilution: 1.0ug/ml



Host: Rabbit; Target Name: ZGPAT; Sample Tissue: Human Fetal Muscle; Antibody Dilution: 1.0ug/ml



WB Suggested Anti-ZGPAT Antibody Titration: 0.2-1 ug/ml; ELISA Titer: 1:62500; Positive Control: 721_B cell lysate ZGPAT is supported by BioGPS gene expression data to be expressed in 721_B