

Product datasheet for **TA329496**

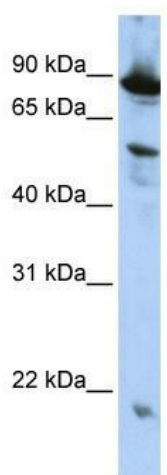
ZGPAT Rabbit Polyclonal Antibody

Product data:

Product Type:	Primary Antibodies
Applications:	WB
Recommended Dilution:	WB
Reactivity:	Human
Host:	Rabbit
Isotype:	IgG
Clonality:	Polyclonal
Immunogen:	The immunogen for anti-ZGPAT antibody: synthetic peptide directed towards the N terminal of human ZGPAT. Synthetic peptide located within the following region: DEESLESALQTYRAQLQQVELALGAGLDSSEQADLRQLQGDLKELIELTE
Formulation:	Liquid. Purified antibody supplied in 1x PBS buffer with 0.09% (w/v) sodium azide and 2% sucrose. <i>Note that this product is shipped as lyophilized powder to China customers.</i>
Conjugation:	Unconjugated
Storage:	Store at -20°C as received.
Stability:	Stable for 12 months from date of receipt.
Predicted Protein Size:	57 kDa
Gene Name:	zinc finger CCCH-type and G-patch domain containing
Database Link:	NP_115916 Entrez Gene 84619 Human Q8N5A5
Background:	ZGPAT contains 1 C3H1-type zinc finger and 1 G-patch domain. The function of the ZGPAT protein is not known.
Synonyms:	GPATC6; GPATCH6; KIAA1847; ZC3H9; ZC3HDC9; ZIP
Note:	Immunogen sequence homology: Rat: 100%; Human: 100%; Mouse: 100%; Pig: 93%; Sheep: 93%; Bovine: 93%; Guinea pig: 93%; Dog: 85%



[View online »](#)

Product images:

WB Suggested Anti-ZGPAT Antibody Titration: 0.2-1 ug/ml; ELISA Titer: 1:312500; Positive Control: HepG2 cell lysate ZGPAT is strongly supported by BioGPS gene expression data to be expressed in Human HepG2 cells