

Product datasheet for **TA329495**

C5ORF4 (FAXDC2) Rabbit Polyclonal Antibody

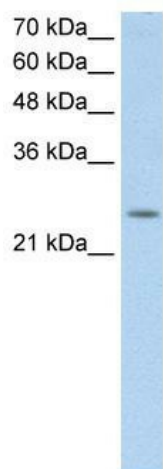
Product data:

Product Type:	Primary Antibodies
Applications:	IHC, WB
Recommended Dilution:	WB, IHC
Reactivity:	Human
Host:	Rabbit
Isotype:	IgG
Clonality:	Polyclonal
Immunogen:	The immunogen for anti-C5orf4 antibody: synthetic peptide directed towards the N terminal of human C5orf4. Synthetic peptide located within the following region: MKGEAGHMLHNEKSKQEGHIWGSRRRTAFILGSGLLSFVAFWNSVTWHLQ
Formulation:	Liquid. Purified antibody supplied in 1x PBS buffer with 0.09% (w/v) sodium azide and 2% sucrose. <i>Note that this product is shipped as lyophilized powder to China customers.</i>
Conjugation:	Unconjugated
Storage:	Store at -20°C as received.
Stability:	Stable for 12 months from date of receipt.
Predicted Protein Size:	21 kDa
Gene Name:	fatty acid hydroxylase domain containing 2
Database Link:	NP_115761 Entrez Gene 10826 Human Q96IV6
Background:	The function remains unknown.
Synonyms:	C5orf4
Note:	Immunogen sequence homology: Dog: 100%; Pig: 100%; Horse: 100%; Human: 100%; Rabbit: 93%; Rat: 92%; Guinea pig: 92%
Protein Families:	Transmembrane

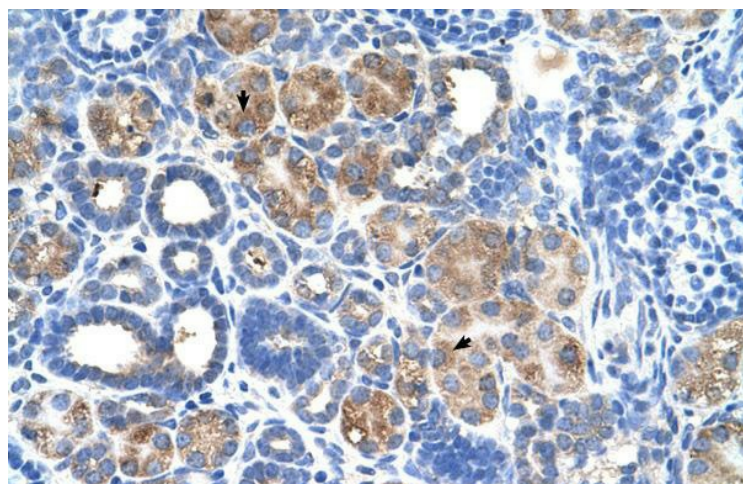


[View online »](#)

Product images:



WB Suggested Anti-C5orf4 Antibody Titration: 0.2-1 ug/ml; Positive Control: HepG2 cell lysate
There is BioGPS gene expression data showing that FAXDC2 is expressed in HepG2



Human kidney