

Product datasheet for **TA329493**

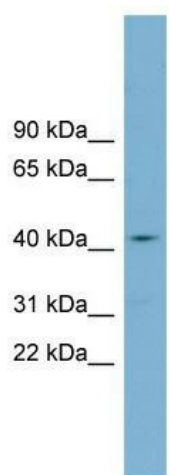
ZDHHC14 Rabbit Polyclonal Antibody

Product data:

Product Type:	Primary Antibodies
Applications:	WB
Recommended Dilution:	WB
Reactivity:	Human
Host:	Rabbit
Isotype:	IgG
Clonality:	Polyclonal
Immunogen:	The immunogen for anti-ZDHHC18 antibody: synthetic peptide directed towards the middle region of human ZDHHC18. Synthetic peptide located within the following region: SFTDPGILPRATVCEAAALEKQIDNTGSSTYRPPPTREVLINGQMVKLK
Formulation:	Liquid. Purified antibody supplied in 1x PBS buffer with 0.09% (w/v) sodium azide and 2% sucrose.
Conjugation:	Unconjugated
Storage:	Store at -20°C as received.
Stability:	Stable for 12 months from date of receipt.
Predicted Protein Size:	42 kDa
Gene Name:	zinc finger DHHC-type containing 14
Database Link:	NP_714968 Entrez Gene 79683 Human Q8IZN3
Background:	ZDHHC18 has palmitoyltransferase activity towards HRAS and LCK.
Synonyms:	NEW1CP
Note:	Immunogen sequence homology: Dog: 100%; Pig: 100%; Rat: 100%; Horse: 100%; Human: 100%; Mouse: 100%; Bovine: 100%; Rabbit: 100%; Guinea pig: 100%; Zebrafish: 93%
Protein Families:	Transmembrane



[View online »](#)

Product images:


WB Suggested Anti-ZDHHC18 Antibody Titration:
0.2-1 ug/ml; Positive Control: OVCAR-3 cell
lysate ZDHHC18 is supported by BioGPS gene
expression data to be expressed in OVCAR3