

Product datasheet for **TA329492**

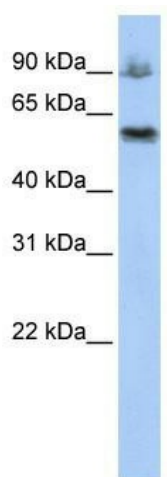
ASCC2 Rabbit Polyclonal Antibody

Product data:

Product Type:	Primary Antibodies
Applications:	WB
Recommended Dilution:	WB
Reactivity:	Human
Host:	Rabbit
Isotype:	IgG
Clonality:	Polyclonal
Immunogen:	The immunogen for anti-ASCC2 antibody: synthetic peptide directed towards the middle region of human ASCC2. Synthetic peptide located within the following region: YEDEYDDTYDGNQVGANDADSDELISRRPFTIPQVLRKVPREGQEEDD
Formulation:	Liquid. Purified antibody supplied in 1x PBS buffer with 0.09% (w/v) sodium azide and 2% sucrose. <i>Note that this product is shipped as lyophilized powder to China customers.</i>
Conjugation:	Unconjugated
Storage:	Store at -20°C as received.
Stability:	Stable for 12 months from date of receipt.
Predicted Protein Size:	86 kDa
Gene Name:	activating signal cointegrator 1 complex subunit 2
Database Link:	NP_115580 Entrez Gene 84164 Human Q9H1I8
Background:	ASCC2 belongs to the ASCC2 family. It contains 1 CUE domain. ASCC2 enhances NF-kappa-B, SRF and AP1 transactivation.
Synonyms:	ASC1p100; p100
Note:	Immunogen sequence homology: Dog: 100%; Pig: 100%; Rat: 100%; Horse: 100%; Human: 100%; Mouse: 100%; Bovine: 100%; Rabbit: 100%; Guinea pig: 100%
Protein Families:	Druggable Genome, Transcription Factors



[View online »](#)

Product images:

WB Suggested Anti-ASCC2 Antibody Titration: 0.2-1 ug/ml; ELISA Titer: 1:12500; Positive Control: HepG2 cell lysate. ASCC2 is supported by BioGPS gene expression data to be expressed in HepG2