

Product datasheet for **TA329491**

Alkaline Phosphatase (ALPPL2) Rabbit Polyclonal Antibody

Product data:

Product Type:	Primary Antibodies
Applications:	WB
Recommended Dilution:	WB
Reactivity:	Human
Host:	Rabbit
Isotype:	IgG
Clonality:	Polyclonal
Immunogen:	The immunogen for anti-ALPPL2 antibody: synthetic peptide directed towards the middle region of human ALPPL2. Synthetic peptide located within the following region: SESGSPEYRQQSAVPLDGETHAGEDVAVFARGPQAHLVHGVQEQTFAHV
Formulation:	Liquid. Purified antibody supplied in 1x PBS buffer with 0.09% (w/v) sodium azide and 2% sucrose. <i>Note that this product is shipped as lyophilized powder to China customers.</i>
Conjugation:	Unconjugated
Storage:	Store at -20°C as received.
Stability:	Stable for 12 months from date of receipt.
Predicted Protein Size:	53 kDa
Gene Name:	alkaline phosphatase, placental like 2
Database Link:	NP_112603 Entrez Gene 251 Human P10696
Background:	There are at least four distinct but related alkaline phosphatases: intestinal, placental, placental-like, and liver/bone/kidney (tissue non-specific). The product of this gene is a membrane bound glycosylated enzyme, localized to testis, thymus and certain germ cell tumors, that is closely related to both the placental and intestinal forms of alkaline phosphatase. [provided by RefSeq, Jul 2008]
Synonyms:	ALPG; ALPPL; GCAP



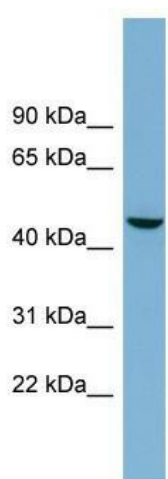
[View online »](#)

Note: Immunogen sequence homology: Human: 100%; Bovine: 93%; Dog: 86%; Zebrafish: 86%; Pig: 79%; Rat: 79%; Horse: 79%; Mouse: 79%; Rabbit: 79%; Guinea pig: 79%

Protein Families: Druggable Genome

Protein Pathways: Folate biosynthesis, Metabolic pathways

Product images:



WB Suggested Anti-ALPPL2 Antibody Titration:
0.2-1 ug/ml; Positive Control: OVCAR-3 cell lysate