

Product datasheet for **TA329488**

EDG8 (S1PR5) Rabbit Polyclonal Antibody

Product data:

Product Type:	Primary Antibodies
Applications:	IHC, WB
Recommended Dilution:	WB, IHC
Reactivity:	Human
Host:	Rabbit
Isotype:	IgG
Clonality:	Polyclonal
Immunogen:	The immunogen for anti-EDG8 antibody: synthetic peptide directed towards the N terminal of human EDG8. Synthetic peptide located within the following region: MESGLLRPAPVSEVIVLHYNVTGKLRGARYQPGAGLRADAVVCLAVCAFI
Formulation:	Liquid. Purified antibody supplied in 1x PBS buffer with 0.09% (w/v) sodium azide and 2% sucrose. <i>Note that this product is shipped as lyophilized powder to China customers.</i>
Conjugation:	Unconjugated
Storage:	Store at -20°C as received.
Stability:	Stable for 12 months from date of receipt.
Predicted Protein Size:	44 kDa
Gene Name:	sphingosine-1-phosphate receptor 5
Database Link:	NP_110387 Entrez Gene 53637 Human Q9H228



[View online »](#)

Background: EDG8 is a receptor for the lysosphingolipid sphingosine 1-phosphate (S1P). S1P is a bioactive lysophospholipid that elicits diverse physiological effect on most types of cells and tissues. It is coupled to both the G(i/o)alpha and G(12) subclass of heteromeric G-proteins (By similarity). It may play a regulatory role in the transformation of radial glial cells into astrocytes and may affect proliferative activity of these cells. The modification of proteins with ubiquitin is an important cellular mechanism for targeting abnormal or short-lived proteins for degradation. Ubiquitination involves at least three classes of enzymes: ubiquitin-activating enzymes, or E1s, ubiquitin-conjugating enzymes, or E2s, and ubiquitin-protein ligases, or E3s. This gene encodes a member of the E2 ubiquitin-conjugating enzyme family. This enzyme functions in the ubiquitination of the tumor-suppressor protein p53, which is induced by an E3 ubiquitin-protein ligase. Two alternatively spliced transcript variants have been found for this gene and they encode distinct isoforms.

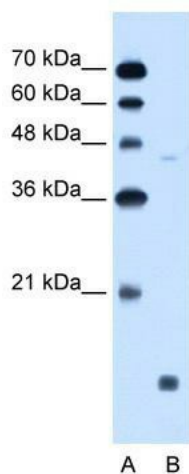
Synonyms: Edg-8; EDG8; S1P5; SPPR-1; SPPR-2

Note: Immunogen sequence homology: Dog: 100%; Pig: 100%; Rat: 100%; Human: 100%; Mouse: 100%; Bovine: 93%

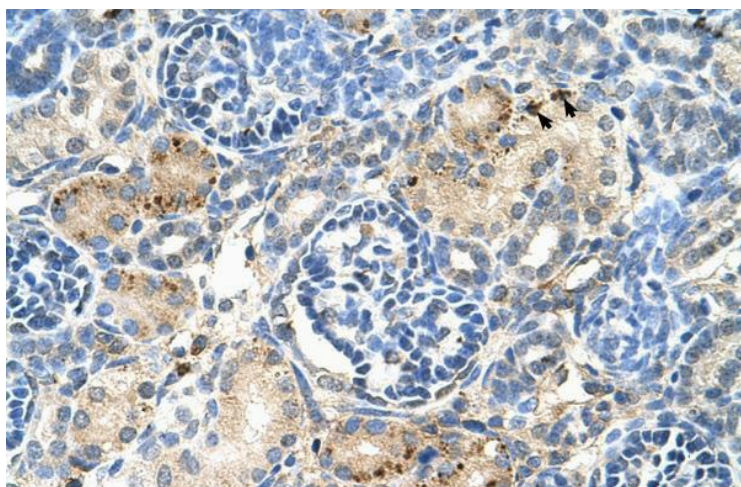
Protein Families: Druggable Genome, GPCR, Transmembrane

Protein Pathways: Neuroactive ligand-receptor interaction

Product images:



WB Suggested Anti-EDG8 Antibody Titration: 0.2-1 ug/ml; Positive Control: Jurkat cell lysate



Human kidney