

Product datasheet for **TA329486**

OSBP2 Rabbit Polyclonal Antibody

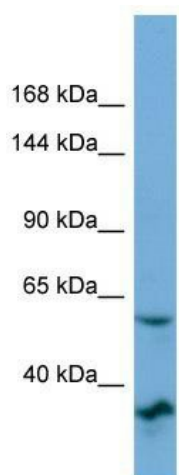
Product data:

Product Type:	Primary Antibodies
Applications:	WB
Recommended Dilution:	WB
Reactivity:	Human
Host:	Rabbit
Isotype:	IgG
Clonality:	Polyclonal
Immunogen:	The immunogen for Anti-OSBP2 antibody is: synthetic peptide directed towards the N-terminal region of Human OSBP2. Synthetic peptide located within the following region: YEQEQRVHLEETIEQLAKQHNSLERAFHSAPGRPANPSKSFIEGSLLLTPK
Formulation:	Liquid. Purified antibody supplied in 1x PBS buffer with 0.09% (w/v) sodium azide and 2% sucrose. <i>Note that this product is shipped as lyophilized powder to China customers.</i>
Purification:	Affinity Purified
Conjugation:	Unconjugated
Storage:	Store at -20°C as received.
Stability:	Stable for 12 months from date of receipt.
Predicted Protein Size:	60 kDa
Gene Name:	oxysterol binding protein 2
Database Link:	NP_110385 Entrez Gene 23762 Human Q969R2
Background:	The function of this protein remains unknown.
Synonyms:	HLM; ORP-4; ORP4; OSBPL1; OSBPL4
Note:	Immunogen sequence homology: Pig: 100%; Rat: 100%; Human: 100%; Mouse: 100%; Bovine: 100%; Rabbit: 100%; Guinea pig: 100%; Horse: 93%; Zebrafish: 86%; Dog: 79%



[View online »](#)

Product images:



Host: Rabbit; Target Name: OSBP2; Sample
Tissue: OVCAR-3 Whole cell lysates; Antibody
Dilution: 1.0ug/ml