

## Product datasheet for **TA329485**

### EGFL8 Rabbit Polyclonal Antibody

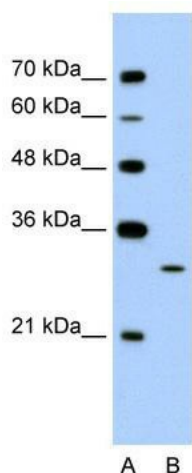
#### Product data:

Product Type:	Primary Antibodies
Applications:	IHC, WB
Recommended Dilution:	WB, IHC
Reactivity:	Human
Host:	Rabbit
Isotype:	IgG
Clonality:	Polyclonal
Immunogen:	The immunogen for anti-EGFL8 antibody: synthetic peptide directed towards the C terminal of human EGFL8. Synthetic peptide located within the following region: QAGAWVRAVLVPPEELQPEQVAELWGRGDRIESLSDQVLLLEERLGACS
Formulation:	Liquid. Purified antibody supplied in 1x PBS buffer with 0.09% (w/v) sodium azide and 2% sucrose. <i>Note that this product is shipped as lyophilized powder to China customers.</i>
Conjugation:	Unconjugated
Storage:	Store at -20°C as received.
Stability:	Stable for 12 months from date of receipt.
Predicted Protein Size:	32 kDa
Gene Name:	EGF like domain multiple 8
Database Link:	<a href="#">NP_085155</a> <a href="#">Entrez Gene 80864 Human</a> <a href="#">Q99944</a>
Background:	The function remains unknown.
Synonyms:	C6orf8; NG3
Note:	Immunogen sequence homology: Pig: 100%; Rat: 100%; Horse: 100%; Human: 100%; Mouse: 100%; Rabbit: 100%; Bovine: 93%; Zebrafish: 90%; Dog: 86%
Protein Families:	Secreted Protein

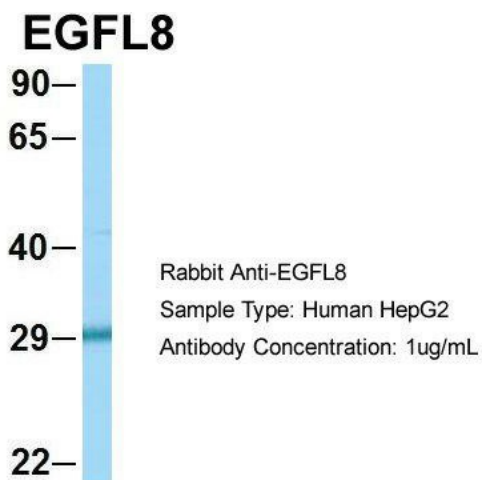


[View online »](#)

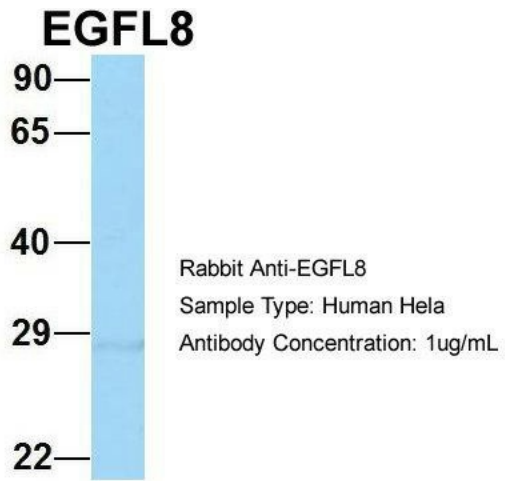
Product images:



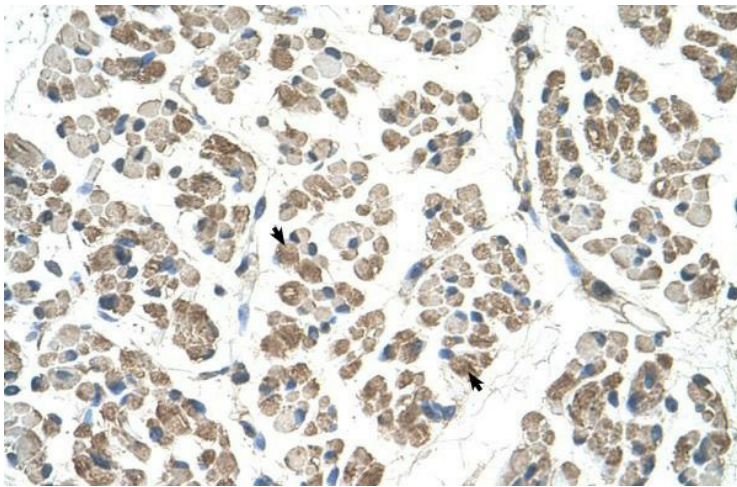
WB Suggested Anti-EGFL8 Antibody Titration: 1.25ug/ml; Positive Control: Jurkat cell lysate



3Human HepG2; Host: Rabbit; Target Name: EGFL8; Sample Tissue: HepG2; Antibody Dilution: 1.0ug/ml; EGFL8 is supported by BioGPS gene expression data to be expressed in HepG2



4Human HeLa; Host: Rabbit; Target Name: EGFL8;  
Sample Tissue: HeLa; Antibody Dilution: 1.0ug/ml;  
EGFL8 is supported by BioGPS gene expression  
data to be expressed in HeLa



Human Muscle