

Product datasheet for **TA329484**

WDR23 (DCAF11) Rabbit Polyclonal Antibody

Product data:

Product Type:	Primary Antibodies
Applications:	IHC, WB
Recommended Dilution:	WB
Reactivity:	Human
Host:	Rabbit
Isotype:	IgG
Clonality:	Polyclonal
Immunogen:	The immunogen for anti-WDR23 antibody: synthetic peptide directed towards the N terminal of human WDR23. Synthetic peptide located within the following region: GSRNSSSAGSGSGDPSEGLPRRGAGLRRSEEEEEDEDVLAQVLAYLLR
Formulation:	Liquid. Purified antibody supplied in 1x PBS buffer with 0.09% (w/v) sodium azide and 2% sucrose. <i>Note that this product is shipped as lyophilized powder to China customers.</i>
Conjugation:	Unconjugated
Storage:	Store at -20°C as received.
Stability:	Stable for 12 months from date of receipt.
Predicted Protein Size:	62 kDa
Gene Name:	DDB1 and CUL4 associated factor 11
Database Link:	NP_079506 Entrez Gene 80344 Human Q8TEB1
Background:	WDR23 contains 7 WD repeats. The function of WDR23 remains unknown. This gene encodes a WD repeat-containing protein. Multiple alternatively spliced transcript variants have been found for this gene, but the full-length nature of some variants has not been defined.
Synonyms:	GL014; PRO2389; WDR23
Note:	Immunogen sequence homology: Pig: 100%; Rat: 100%; Human: 100%; Rabbit: 100%; Guinea pig: 100%; Dog: 93%; Bovine: 93%; Horse: 86%; Mouse: 86%

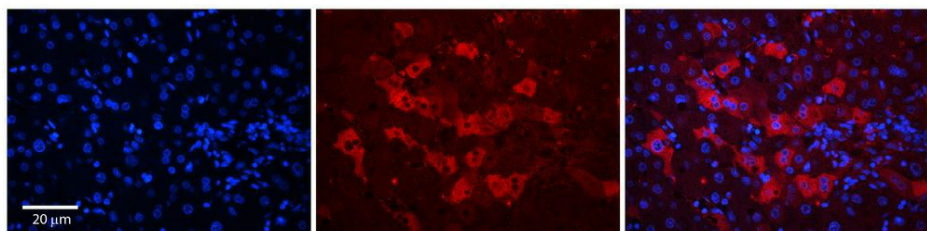


[View online »](#)

Product images:



WB Suggested Anti-WDR23 Antibody Titration:
0.2-1 ug/ml; ELISA Titer: 1:312500; Positive
Control: Human Placenta



Rabbit Anti-DCAF11 Antibody; Formalin Fixed
Paraffin Embedded Tissue: Human Adult Liver;
Observed Staining: Cytoplasm in hepatocytes,
strong signal, moderate tissue distribution;
Primary Antibody Concentration: 1:100;
Secondary Antibody: Donkey anti-Rabbit-Cy3;
Secondary Antibody Concentration: 1:200;
Magnification: 20X; Exposure Time: 0.5–2.0 sec;
Protocol located in Reviews and Data.