

## Product datasheet for **TA329483**

### TPTE Rabbit Polyclonal Antibody

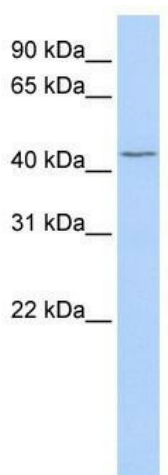
#### Product data:

Product Type:	Primary Antibodies
Applications:	WB
Recommended Dilution:	WB
Reactivity:	Human
Host:	Rabbit
Isotype:	IgG
Clonality:	Polyclonal
Immunogen:	The immunogen for anti-TRABD antibody: synthetic peptide directed towards the middle region of human TRABD. Synthetic peptide located within the following region: LCFLSDPISKDDVERCKQKDLLEQMQMAEMIGFDPDLHRTIVSERDVYLYT
Formulation:	Liquid. Purified antibody supplied in 1x PBS buffer with 0.09% (w/v) sodium azide and 2% sucrose. <i>Note that this product is shipped as lyophilized powder to China customers.</i>
Conjugation:	Unconjugated
Storage:	Store at -20°C as received.
Stability:	Stable for 12 months from date of receipt.
Predicted Protein Size:	42 kDa
Gene Name:	transmembrane phosphatase with tensin homology
Database Link:	<a href="#">NP_954868</a> <a href="#">Entrez Gene 7179 Human</a> <a href="#">P56180</a>
Background:	The function of TRABD remains unknown.
Synonyms:	CT44; PTEN2
Note:	Immunogen sequence homology: Dog: 100%; Pig: 100%; Rat: 100%; Horse: 100%; Human: 100%; Mouse: 100%; Bovine: 100%; Guinea pig: 100%; Zebrafish: 86%
Protein Families:	Druggable Genome, Transmembrane



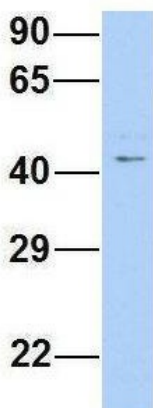
[View online »](#)

Product images:



WB Suggested Anti-TRABD Antibody Titration:  
0.2-1 ug/ml; ELISA Titer: 1:312500; Positive  
Control: Hela cell lysate

**TRABD**



Rabbit Anti-TRABD  
Sample Type: Human 721\_B  
Antibody Concentration: 1ug/mL

Host: Rabbit; Target Name: TRABD; Sample  
Tissue: 721\_B; Antibody Dilution: 1.0ug/ml;  
TRABD is supported by BioGPS gene expression  
data to be expressed in 721\_B