

Product datasheet for **TA329482**

TPTE Rabbit Polyclonal Antibody

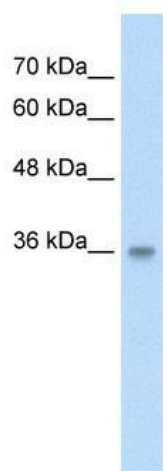
Product data:

Product Type:	Primary Antibodies
Applications:	WB
Recommended Dilution:	WB
Reactivity:	Human
Host:	Rabbit
Isotype:	IgG
Clonality:	Polyclonal
Immunogen:	The immunogen for anti-PP2447 antibody: synthetic peptide directed towards the N terminal of human PP2447. Synthetic peptide located within the following region: MDGEEQPPHEANVEPVVPSEASEPVPRVLSGDPQNLSDVDAFNLLLEMK
Formulation:	Liquid. Purified antibody supplied in 1x PBS buffer with 0.09% (w/v) sodium azide and 2% sucrose. <i>Note that this product is shipped as lyophilized powder to China customers.</i>
Conjugation:	Unconjugated
Storage:	Store at -20°C as received.
Stability:	Stable for 12 months from date of receipt.
Predicted Protein Size:	41 kDa
Gene Name:	transmembrane phosphatase with tensin homology
Database Link:	NP_954868 Entrez Gene 7179 Human P56180
Background:	The function remains unknown.
Synonyms:	CT44; PTEN2
Note:	Immunogen sequence homology: Dog: 100%; Pig: 100%; Rat: 100%; Human: 100%; Mouse: 100%; Bovine: 100%; Guinea pig: 100%; Horse: 93%
Protein Families:	Druggable Genome, Transmembrane



[View online »](#)

Product images:



WB Suggested Anti-[PP2447] Antibody Titration:
2.5ug/ml; Positive Control: HepG2 cell lysate