

Product datasheet for **TA329481**

Atat1 Rabbit Polyclonal Antibody

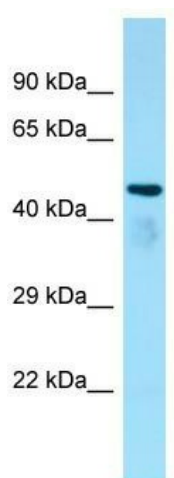
Product data:

Product Type:	Primary Antibodies
Applications:	WB
Recommended Dilution:	WB
Reactivity:	Rat
Host:	Rabbit
Isotype:	IgG
Clonality:	Polyclonal
Immunogen:	The immunogen for Anti-Atat1 antibody is: synthetic peptide directed towards the middle region of Rat Atat1. Synthetic peptide located within the following region: WPLNRAPRRATPPAHPPPRSSSLGNSPDRGPLRPFVPEQELLRSLRLCPP
Formulation:	Liquid. Purified antibody supplied in 1x PBS buffer with 0.09% (w/v) sodium azide and 2% sucrose. <i>Note that this product is shipped as lyophilized powder to China customers.</i>
Conjugation:	Unconjugated
Storage:	Store at -20°C as received.
Stability:	Stable for 12 months from date of receipt.
Predicted Protein Size:	46 kDa
Gene Name:	alpha tubulin acetyltransferase 1
Database Link:	NP_997663 Entrez Gene 361789 Rat Q6MG11
Background:	Atat1 specifically acetylates 'Lys-40' in alpha-tubulin on the luminal side of microtubules. Atat1 may affect microtubule stability and regulate microtubule dynamics and may be involved in neuron development.
Synonyms:	0610011P08Rik; 2610008K08Rik; 2610110G12Rik; 3110080J08Rik; Mec17; RGD1303066; RP24-180B11.6; TAT
Note:	Immunogen sequence homology: Pig: 100%; Rat: 100%; Horse: 100%; Human: 100%; Bovine: 100%; Guinea pig: 100%; Dog: 93%; Mouse: 93%; Rabbit: 93%



[View online »](#)

Product images:



WB Suggested Anti-Atat1 Antibody; Titration: 1.0 ug/ml; Positive Control: Rat Kidney