

Product datasheet for **TA329480**

C6orf134 (ATAT1) Rabbit Polyclonal Antibody

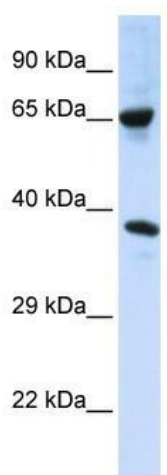
Product data:

Product Type:	Primary Antibodies
Applications:	WB
Recommended Dilution:	WB
Reactivity:	Human
Host:	Rabbit
Isotype:	IgG
Clonality:	Polyclonal
Immunogen:	The immunogen for anti-C6orf134 antibody: synthetic peptide directed towards the middle region of human C6orf134. Synthetic peptide located within the following region: DDREAHNEVEPLCILDYIHESVQRHGHGRELFQYMLQKERVEPHQLAID
Formulation:	Liquid. Purified antibody supplied in 1x PBS buffer with 0.09% (w/v) sodium azide and 2% sucrose. <i>Note that this product is shipped as lyophilized powder to China customers.</i>
Conjugation:	Unconjugated
Storage:	Store at -20°C as received.
Stability:	Stable for 12 months from date of receipt.
Predicted Protein Size:	36 kDa
Gene Name:	alpha tubulin acetyltransferase 1
Database Link:	NP_079185 Entrez Gene 79969 Human Q5SQI0
Background:	The exact function of C6orf134 remains unknown.
Synonyms:	alpha-TAT; alpha-TAT1; C6orf134; MEC17; Nbla00487; TAT
Note:	Immunogen sequence homology: Rat: 100%; Horse: 100%; Human: 100%; Mouse: 100%; Rabbit: 100%; Pig: 93%; Bovine: 93%; Guinea pig: 93%; Dog: 86%



[View online »](#)

Product images:



WB Suggested Anti-C6orf134 Antibody Titration: 0.2-1 ug/ml; ELISA Titer: 1:62500; Positive Control: 293T cell lysate ATAT1 is supported by BioGPS gene expression data to be expressed in HEK293T