

Product datasheet for **TA329477**

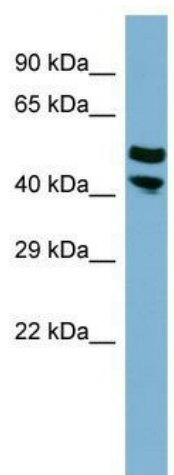
FLJ14213 (PRR5L) Rabbit Polyclonal Antibody

Product data:

Product Type:	Primary Antibodies
Applications:	WB
Recommended Dilution:	WB
Reactivity:	Human
Host:	Rabbit
Isotype:	IgG
Clonality:	Polyclonal
Immunogen:	The immunogen for anti-FLJ14213 antibody: synthetic peptide directed towards the middle region of human FLJ14213. Synthetic peptide located within the following region: LNYASPITAVSRPLNEMVLTPLTEQEGEAYLEKCGSVRRHTVANAHSDIQ
Formulation:	Liquid. Purified antibody supplied in 1x PBS buffer with 0.09% (w/v) sodium azide and 2% sucrose.
Conjugation:	Unconjugated
Storage:	Store at -20°C as received.
Stability:	Stable for 12 months from date of receipt.
Predicted Protein Size:	41 kDa
Gene Name:	proline rich 5 like
Database Link:	NP_079117 Entrez Gene 79899 Human Q6MZQ0
Background:	The function remains unknown.
Synonyms:	PROTOR2
Note:	Immunogen sequence homology: Dog: 100%; Pig: 100%; Rat: 100%; Horse: 100%; Human: 100%; Mouse: 100%; Bovine: 100%; Rabbit: 100%; Guinea pig: 100%; Zebrafish: 83%



[View online »](#)

Product images:

WB Suggested Anti-FLJ14213 Antibody Titration:
0.2-1 ug/ml; ELISA Titer: 1:62500; Positive Control:
THP-1 cell lysate