

Product datasheet for **TA329476**

FLJ14213 (PRR5L) Rabbit Polyclonal Antibody

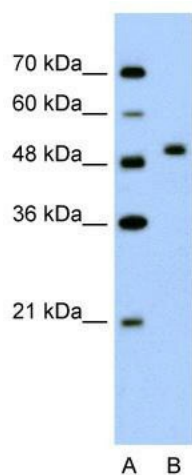
Product data:

Product Type:	Primary Antibodies
Applications:	WB
Recommended Dilution:	WB
Reactivity:	Human
Host:	Rabbit
Isotype:	IgG
Clonality:	Polyclonal
Immunogen:	The immunogen for anti-FLJ14213 antibody: synthetic peptide directed towards the N terminal of human FLJ14213. Synthetic peptide located within the following region: SAWNSVQTAVINVFKGGGLQSNELYALNENIRLLKSELGFSFITDYFQNQ
Formulation:	Liquid. Purified antibody supplied in 1x PBS buffer with 0.09% (w/v) sodium azide and 2% sucrose.
Conjugation:	Unconjugated
Storage:	Store at -20°C as received.
Stability:	Stable for 12 months from date of receipt.
Predicted Protein Size:	40 kDa
Gene Name:	proline rich 5 like
Database Link:	NP_079117 Entrez Gene 79899 Human Q6MZQ0
Background:	The function remains unknown.
Synonyms:	PROTOR2
Note:	Immunogen sequence homology: Dog: 100%; Pig: 100%; Rat: 100%; Human: 100%; Mouse: 100%; Bovine: 100%; Guinea pig: 100%; Rabbit: 93%; Zebrafish: 86%



[View online »](#)

Product images:



WB Suggested Anti-FLJ14213 Antibody Titration:
2.5ug/ml; Positive Control: Jurkat cell lysate