

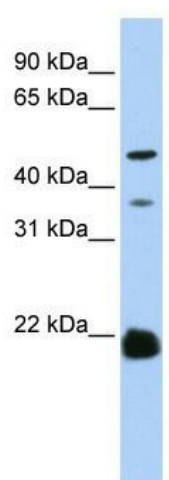
Product datasheet for **TA329473**

ZDHHC14 Rabbit Polyclonal Antibody

Product data:

Product Type:	Primary Antibodies
Applications:	WB
Recommended Dilution:	WB
Reactivity:	Human
Host:	Rabbit
Isotype:	IgG
Clonality:	Polyclonal
Immunogen:	The immunogen for anti-ZDHHC14 antibody: synthetic peptide directed towards the N terminal of human ZDHHC14. Synthetic peptide located within the following region: TLLRTSFSDPGVLP ATPDEAADLERQIDIANGTSSGGYRPPPTKEVII
Formulation:	Liquid. Purified antibody supplied in 1x PBS buffer with 0.09% (w/v) sodium azide and 2% sucrose.
Conjugation:	Unconjugated
Storage:	Store at -20°C as received.
Stability:	Stable for 12 months from date of receipt.
Predicted Protein Size:	53 kDa
Gene Name:	zinc finger DHHC-type containing 14
Database Link:	NP_714968 Entrez Gene 79683 Human Q8IZN3
Background:	ZDHHC14 belongs to the DHHC palmitoyltransferase family, ERF2/ZDHHC9 subfamily. It contains 1 DHHC-type zinc finger. It is a multi-pass membrane protein. The function of ZDHHC14 remains unknown.
Synonyms:	NEW1CP
Note:	Immunogen sequence homology: Dog: 100%; Pig: 100%; Rat: 100%; Horse: 100%; Human: 100%; Mouse: 100%; Bovine: 100%; Rabbit: 100%; Zebrafish: 100%; Guinea pig: 100%
Protein Families:	Transmembrane


[View online »](#)

Product images:


WB Suggested Anti-ZDHHC14 Antibody Titration:
0.2-1 ug/ml; ELISA Titer: 1:1562500; Positive
Control: Hela cell lysate