

Product datasheet for **TA329471**

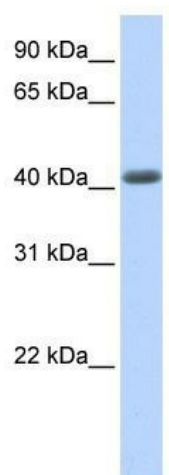
LRRC2 Rabbit Polyclonal Antibody

Product data:

Product Type:	Primary Antibodies
Applications:	WB
Recommended Dilution:	WB
Reactivity:	Human
Host:	Rabbit
Isotype:	IgG
Clonality:	Polyclonal
Immunogen:	The immunogen for anti-LRRC2 antibody: synthetic peptide directed towards the N terminal of human LRRC2. Synthetic peptide located within the following region: GHKVVFDISVIRALWETRVKHKHAWQKKEVERLEKSALEKIKEEWNFVA
Formulation:	Liquid. Purified antibody supplied in 1x PBS buffer with 0.09% (w/v) sodium azide and 2% sucrose. <i>Note that this product is shipped as lyophilized powder to China customers.</i>
Conjugation:	Unconjugated
Storage:	Store at -20°C as received.
Stability:	Stable for 12 months from date of receipt.
Predicted Protein Size:	43 kDa
Gene Name:	leucine rich repeat containing 2
Database Link:	NP_079026 Entrez Gene 79442 Human Q9BYS8
Background:	The function remains unknown.
Synonyms:	leucine-rich repeat-containing 2; leucine rich repeat containing 2
Note:	Immunogen sequence homology: Human: 100%; Dog: 93%; Pig: 93%; Rat: 93%; Horse: 93%; Mouse: 93%; Bovine: 93%; Rabbit: 93%; Guinea pig: 92%
Protein Families:	Druggable Genome



[View online »](#)

Product images:

WB Suggested Anti-LRRC2 Antibody Titration: 0.2-1 ug/ml; Positive Control: Human Muscle