

## Product datasheet for **TA329469**

### GPR87 Rabbit Polyclonal Antibody

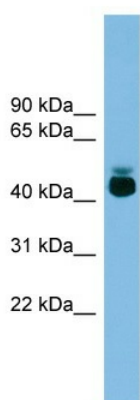
#### Product data:

Product Type:	Primary Antibodies
Recommended Dilution:	WB
Reactivity:	Human
Host:	Rabbit
Isotype:	IgG
Clonality:	Polyclonal
Immunogen:	The immunogen for anti-GPR87 antibody: synthetic peptide directed towards the middle region of human GPR87. Synthetic peptide located within the following region: NQSIRVVAVFFTCFLPYHLCRIPFTFSHLDRLLDESAQKILYYCKEITL
Formulation:	Liquid. Purified antibody supplied in 1x PBS buffer with 0.09% (w/v) sodium azide and 2% sucrose. <i>Note that this product is shipped as lyophilized powder to China customers.</i>
Conjugation:	Unconjugated
Storage:	Store at -20°C as received.
Stability:	Stable for 12 months from date of receipt.
Predicted Protein Size:	41 kDa
Gene Name:	G protein-coupled receptor 87
Database Link:	<a href="#">NP_076404</a> <a href="#">Entrez Gene 53836 Human Q9BY21</a>
Background:	G protein-coupled receptors play a role in cell communication. They are characterized by an extracellular N terminus, 7 transmembrane regions, and an intracellular C terminus.
Synonyms:	FKSG78; GPR95; KPG_002
Note:	Immunogen sequence homology: Human: 100%; Dog: 93%; Pig: 93%; Mouse: 93%; Bovine: 93%; Rabbit: 93%; Guinea pig: 93%; Horse: 86%; Rat: 79%
Protein Families:	Druggable Genome, GPCR, Transmembrane



[View online »](#)

Product images:



WB Suggested Anti-GPR87 Antibody Titration: 0.2-1 ug/ml  
ELISA Titer: 1:312500  
Positive Control: NCI-H226 cell lysate