

Product datasheet for **TA329466**

GH2 Rabbit Polyclonal Antibody

Product data:

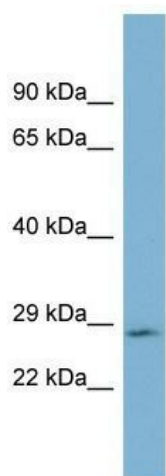
Product Type:	Primary Antibodies
Applications:	WB
Recommended Dilution:	WB
Reactivity:	Human
Host:	Rabbit
Isotype:	IgG
Clonality:	Polyclonal
Immunogen:	The immunogen for anti-GH2 antibody: synthetic peptide directed towards the middle region of human GH2. Synthetic peptide located within the following region: LEEGIQLIGWKMAAPGLGRSSISPTASLTQNRTTMTTHCSRRTGCSTASG
Formulation:	Liquid. Purified antibody supplied in 1x PBS buffer with 0.09% (w/v) sodium azide and 2% sucrose. <i>Note that this product is shipped as lyophilized powder to China customers.</i>
Conjugation:	Unconjugated
Storage:	Store at -20°C as received.
Stability:	Stable for 12 months from date of receipt.
Predicted Protein Size:	27 kDa
Gene Name:	growth hormone 2
Database Link:	NP_072050 Entrez Gene 2689 Human P01242
Background:	GH2 is a member of the somatotropin/prolactin family of hormones which play an important role in growth control. Mutations in its gene lead to placental growth hormone/lactogen deficiency.
Synonyms:	GH-V; GHL; GHV; hGH-V
Note:	Immunogen sequence homology: Human: 100%
Protein Families:	Druggable Genome, Secreted Protein



[View online »](#)

Protein Pathways: Cytokine-cytokine receptor interaction, Jak-STAT signaling pathway, Neuroactive ligand-receptor interaction

Product images:



WB Suggested Anti-GH2 Antibody Titration: 0.2-1 ug/ml; ELISA Titer: 1:62500; Positive Control: PANC1 cell lysate GH2 is supported by BioGPS gene expression data to be expressed in PANC1