

Product datasheet for **TA329465**

RAB38 Rabbit Polyclonal Antibody

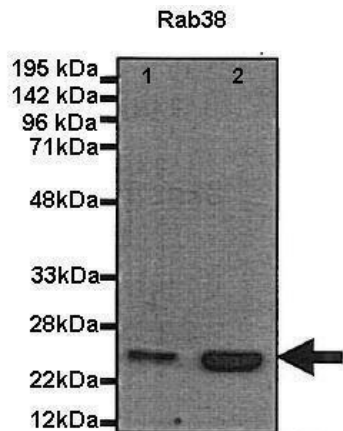
Product data:

Product Type:	Primary Antibodies
Applications:	WB
Recommended Dilution:	WB
Reactivity:	Human, Mouse
Host:	Rabbit
Isotype:	IgG
Clonality:	Polyclonal
Immunogen:	The immunogen for anti-RAB38 antibody: synthetic peptide directed towards the N terminal of human RAB38. Synthetic peptide located within the following region: MQAPHKEHLYKLLVIGDLGVGKTSIIKRYVHQNFSSHYRATIGVDFALKV
Formulation:	Liquid. Purified antibody supplied in 1x PBS buffer with 0.09% (w/v) sodium azide and 2% sucrose. <i>Note that this product is shipped as lyophilized powder to China customers.</i>
Conjugation:	Unconjugated
Storage:	Store at -20°C as received.
Stability:	Stable for 12 months from date of receipt.
Predicted Protein Size:	24 kDa
Gene Name:	RAB38, member RAS oncogene family
Database Link:	NP_071732 Entrez Gene 72433 Mouse Entrez Gene 23682 Human P57729
Background:	RAB38 may be involved in melanosomal transport and docking. Involved in the proper sorting of TYRP1.
Synonyms:	NY-MEL-1; rrGTPbp
Note:	Immunogen sequence homology: Dog: 100%; Pig: 100%; Rat: 100%; Horse: 100%; Human: 100%; Mouse: 100%; Bovine: 100%; Rabbit: 100%; Guinea pig: 100%; Zebrafish: 90%
Protein Families:	Druggable Genome



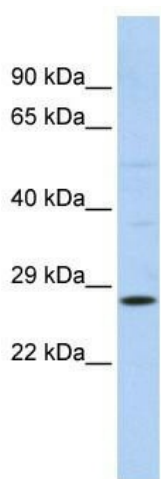
[View online »](#)

Product images:



Human, Mouse

See Immunoblot 2 Data and Customer Feedback for more Information



WB Suggested Anti-RAB38 Antibody Titration: 0.2-1 ug/ml; ELISA Titer: 1:312500; Positive Control: MCF7 cell lysate