

Product datasheet for **TA329464**

Gpr88 Rabbit Polyclonal Antibody

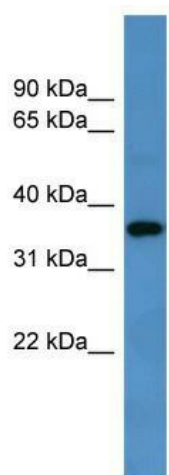
Product data:

Product Type:	Primary Antibodies
Applications:	WB
Recommended Dilution:	WB
Reactivity:	Rat
Host:	Rabbit
Isotype:	IgG
Clonality:	Polyclonal
Immunogen:	The immunogen for anti-Gpr88 antibody: synthetic peptide corresponding to a region of Rat. Synthetic peptide located within the following region: LYTWRNEEFRRSVRSVLPVGDAAAAAAAAATAVPAMSQAQLGTRAAGQHW
Formulation:	Liquid. Purified antibody supplied in 1x PBS buffer with 0.09% (w/v) sodium azide and 2% sucrose. <i>Note that this product is shipped as lyophilized powder to China customers.</i>
Conjugation:	Unconjugated
Storage:	Store at -20°C as received.
Stability:	Stable for 12 months from date of receipt.
Predicted Protein Size:	40 kDa
Gene Name:	G-protein coupled receptor 88
Database Link:	NP_113884 Entrez Gene 64443 Rat Q9ESP4
Background:	Gpr88 is the orphan receptor.
Synonyms:	AW061286; Strg
Note:	Immunogen sequence homology: Dog: 100%; Rat: 100%; Human: 100%; Mouse: 100%; Bovine: 100%; Rabbit: 100%



[View online »](#)

Product images:



WB Suggested Anti-Gpr88 Antibody Titration: 0.2-1 ug/ml; ELISA Titer: 1:312500; Positive Control: Rat Brain