

## Product datasheet for **TA329462**

### AMCase (CHIA) Rabbit Polyclonal Antibody

#### Product data:

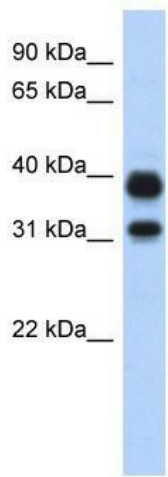
Product Type:	Primary Antibodies
Applications:	WB
Recommended Dilution:	WB
Reactivity:	Human
Host:	Rabbit
Isotype:	IgG
Clonality:	Polyclonal
Immunogen:	The immunogen for anti-CHIA antibody: synthetic peptide directed towards the N terminal of human CHIA. Synthetic peptide located within the following region: MVSTPENRQTFITSVIKFLRQYEFDGLDFDWEYPGSRGSPQDKHLFTVL
Formulation:	Liquid. Purified antibody supplied in 1x PBS buffer with 0.09% (w/v) sodium azide and 2% sucrose. <i>Note that this product is shipped as lyophilized powder to China customers.</i>
Conjugation:	Unconjugated
Storage:	Store at -20°C as received.
Stability:	Stable for 12 months from date of receipt.
Predicted Protein Size:	40 kDa
Gene Name:	chitinase, acidic
Database Link:	<a href="#">NP_068569</a> <a href="#">Entrez Gene 27159 Human</a> <a href="#">Q9BZP6</a>
Background:	CHIA belongs to the glycosyl hydrolase 18 family. Chitinase class II subfamily. It contains 1 chitin-binding type-2 domain. The protein degrades chitin and chitotriose. And it may participate in the defense against nematodes and other pathogens.
Synonyms:	AMCASE; CHIT2; TSA1902
Note:	Immunogen sequence homology: Dog: 100%; Rat: 100%; Human: 100%; Mouse: 100%; Pig: 93%; Bovine: 93%; Horse: 86%; Zebrafish: 86%; Guinea pig: 79%
Protein Families:	Secreted Protein



[View online »](#)

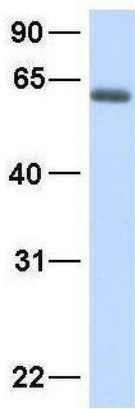
Protein Pathways: Amino sugar and nucleotide sugar metabolism

Product images:



WB Suggested Anti-CHIA Antibody Titration: 0.2-1 ug/ml; ELISA Titer: 1:62500; Positive Control: Transfected 293T

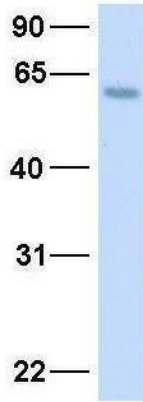
CHIA



Rabbit Anti-CHIA  
Sample Type: Human Fetal Heart  
Antibody Concentration: 1ug/mL

Host: Rabbit; Target Name: CHIA; Sample Tissue: Human Fetal Heart; Antibody Dilution: 1.0ug/ml

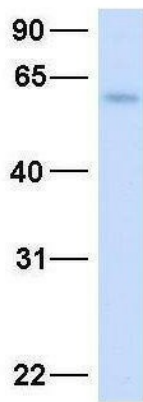
### CHIA



Rabbit Anti-CHIA  
Sample Type: Human Fetal Lung  
Antibody Concentration: 1ug/mL

Host: Rabbit; Target Name: CHIA; Sample Tissue:  
Human Fetal Lung; Antibody Dilution: 1.0ug/ml

### CHIA



Rabbit Anti-CHIA  
Sample Type: Human Fetal Liver  
Antibody Concentration: 1ug/mL

Host: Rabbit; Target Name: CHIA; Sample Tissue:  
Human Fetal Liver; Antibody Dilution: 1.0ug/ml