

## Product datasheet for **TA329460**

### DNASE2B Rabbit Polyclonal Antibody

#### Product data:

Product Type:	Primary Antibodies
Applications:	WB
Recommended Dilution:	WB
Reactivity:	Human
Host:	Rabbit
Isotype:	IgG
Clonality:	Polyclonal
Immunogen:	The immunogen for anti-DNASE2B antibody: synthetic peptide directed towards the middle region of human DNASE2B. Synthetic peptide located within the following region: IKAIKLSRHSYFSSYQDHAKWCISQKGTKNRWTCIGDLNRSPhQAFRSGG
Formulation:	Liquid. Purified antibody supplied in 1x PBS buffer with 0.09% (w/v) sodium azide and 2% sucrose. <i>Note that this product is shipped as lyophilized powder to China customers.</i>
Conjugation:	Unconjugated
Storage:	Store at -20°C as received.
Stability:	Stable for 12 months from date of receipt.
Predicted Protein Size:	39 kDa
Gene Name:	deoxyribonuclease II beta
Database Link:	<a href="#">NP_067056</a> <a href="#">Entrez Gene 58511 Human</a> <a href="#">Q8WZ79</a>



[View online »](#)

**Background:** DNASE2B shares considerable sequence similarity to, and is structurally related to DNase II. The latter is a well characterized endonuclease that catalyzes DNA hydrolysis in the absence of divalent cations at acidic pH. Unlike DNase II which is ubiquitously expressed, expression of this protein is restricted to the salivary gland and lungs. The protein encoded by this gene shares considerable sequence similarity to, and is structurally related to DNase II. The latter is a well characterized endonuclease that catalyzes DNA hydrolysis in the absence of divalent cations at acidic pH. Unlike DNase II which is ubiquitously expressed, expression of this gene product is restricted to the salivary gland and lungs. The gene has been localized to chromosome 1p22.3 adjacent (and in opposite orientation) to the uricase pseudogene. Two transcript variants encoding different isoforms have been described for this gene.

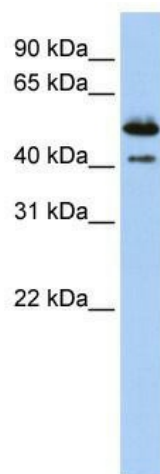
**Synonyms:** DLAD

**Note:** Immunogen sequence homology: Human: 100%; Bovine: 93%; Pig: 86%; Rat: 86%; Horse: 86%; Guinea pig: 79%

**Protein Families:** Transmembrane

**Protein Pathways:** Lysosome

### Product images:



WB Suggested Anti-DNASE2B Antibody Titration:  
0.2-1 ug/ml; ELISA Titer: 1:312500; Positive  
Control: Human Placenta