

## Product datasheet for **TA329454**

### ART4 Rabbit Polyclonal Antibody

#### Product data:

Product Type:	Primary Antibodies
Applications:	WB
Recommended Dilution:	WB
Reactivity:	Human
Host:	Rabbit
Isotype:	IgG
Clonality:	Polyclonal
Immunogen:	The immunogen for anti-ART4 antibody: synthetic peptide directed towards the middle region of human ART4. Synthetic peptide located within the following region: TLCYEVHYRTKDVHFNAYTGATIRFGQFLSTSLKKEEAQEFGNQTLFTIF
Formulation:	Liquid. Purified antibody supplied in 1x PBS buffer with 0.09% (w/v) sodium azide and 2% sucrose. <i>Note that this product is shipped as lyophilized powder to China customers.</i>
Conjugation:	Unconjugated
Storage:	Store at -20°C as received.
Stability:	Stable for 12 months from date of receipt.
Predicted Protein Size:	31 kDa
Gene Name:	ADP-ribosyltransferase 4 (Dombrock blood group)
Database Link:	<a href="#">NP_066549</a> <a href="#">Entrez Gene 420 Human</a> <a href="#">Q93070</a>



[View online »](#)

**Background:**

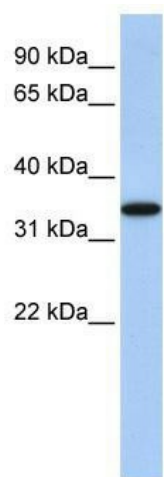
ART4 is a protein that contains a mono-ADP-ribosylation (ART) motif. It is a member of the ADP-ribosyltransferase gene family but enzymatic activity has not been demonstrated experimentally. Antigens of the Dombrock blood group system are located on the gene product, which is glycosylphosphatidylinositol-anchored to the erythrocyte membrane. Allelic variants, some of which lead to adverse transfusion reactions, are known. This gene encodes a protein that contains a mono-ADP-ribosylation (ART) motif. It is a member of the ADP-ribosyltransferase gene family but enzymatic activity has not been demonstrated experimentally. Antigens of the Dombrock blood group system are located on the gene product, which is glycosylphosphatidylinositol-anchored to the erythrocyte membrane. Allelic variants, some of which lead to adverse transfusion reactions, are known. Publication Note: This RefSeq record includes a subset of the publications that are available for this gene. Please see the Entrez Gene record to access additional publications.

**Synonyms:**

ARTC4; CD297; DO; DOK1

**Note:**

Immunogen sequence homology: Human: 100%; Rabbit: 92%; Pig: 85%; Horse: 85%; Sheep: 85%; Bovine: 85%; Rat: 79%

**Product images:**

WB Suggested Anti-ART4 Antibody Titration: 0.2-1 ug/ml; ELISA Titer: 1:312500; Positive Control: Human heart