

Product datasheet for **TA329452**

PSG3 Rabbit Polyclonal Antibody

Product data:

Product Type:	Primary Antibodies
Applications:	IHC, WB
Recommended Dilution:	WB, IHC
Reactivity:	Human
Host:	Rabbit
Isotype:	IgG
Clonality:	Polyclonal
Immunogen:	The immunogen for anti-PSG3 antibody: synthetic peptide directed towards the N terminal of human PSG3. Synthetic peptide located within the following region: VYSNASLLIQNVTREDAGSYTLHIVKRGDGRGETGHFTFTLYLETPKPS
Formulation:	Liquid. Purified antibody supplied in 1x PBS buffer with 0.09% (w/v) sodium azide and 2% sucrose. <i>Note that this product is shipped as lyophilized powder to China customers.</i>
Conjugation:	Unconjugated
Storage:	Store at -20°C as received.
Stability:	Stable for 12 months from date of receipt.
Predicted Protein Size:	16 kDa
Gene Name:	pregnancy specific beta-1-glycoprotein 3
Database Link:	NP_066296 Entrez Gene 5671 Human Q16557
Background:	The function remains unknown.
Synonyms:	pregnancy specific beta-1-glycoprotein 3
Note:	Immunogen sequence homology: Human: 100%
Protein Families:	Secreted Protein

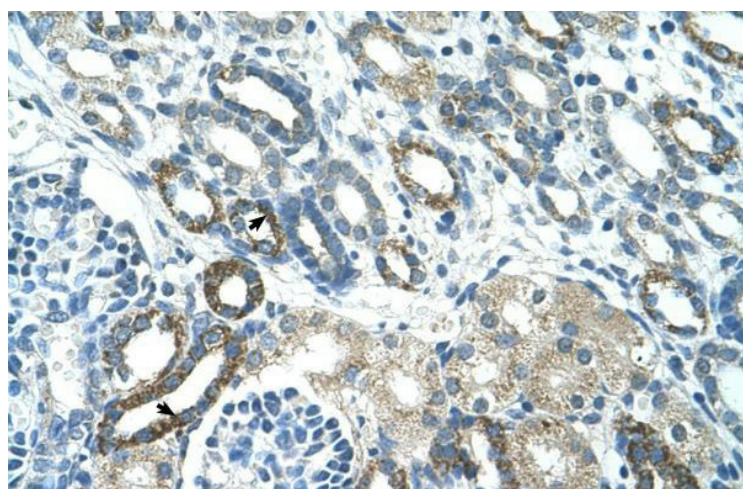


[View online »](#)

Product images:



WB Suggested Anti-PSG3 Antibody Titration: 5.0 ug/ml; Positive Control: HepG2 cell lysate



Human kidney