

## Product datasheet for **TA329451**

### PLEKHA4 Rabbit Polyclonal Antibody

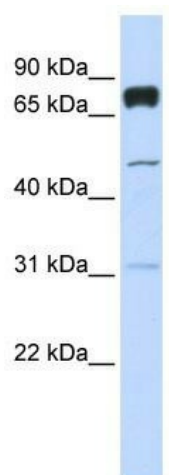
#### Product data:

Product Type:	Primary Antibodies
Applications:	WB
Recommended Dilution:	WB
Reactivity:	Human
Host:	Rabbit
Isotype:	IgG
Clonality:	Polyclonal
Immunogen:	The immunogen for anti-PLEKHA4 antibody: synthetic peptide directed towards the middle region of human PLEKHA4. Synthetic peptide located within the following region: TEPDSPSPVLQGEESSERESLPESLELSSPRSPETDWGRPPGGDKDLASP
Formulation:	Liquid. Purified antibody supplied in 1x PBS buffer with 0.09% (w/v) sodium azide and 2% sucrose. <i>Note that this product is shipped as lyophilized powder to China customers.</i>
Conjugation:	Unconjugated
Storage:	Store at -20°C as received.
Stability:	Stable for 12 months from date of receipt.
Predicted Protein Size:	85 kDa
Gene Name:	pleckstrin homology domain containing A4
Database Link:	<a href="#">NP_065955</a> <a href="#">Entrez Gene 57664 Human Q9H4M7</a>
Background:	PLEKHA4 contains 1 PH domain. It binds specifically to phosphatidylinositol-3-phosphate (PtdIns3P), but not to other phosphoinositides.
Synonyms:	PEPP1
Note:	Immunogen sequence homology: Human: 100%; Dog: 93%; Pig: 93%; Rat: 93%; Bovine: 93%; Rabbit: 93%; Horse: 86%; Mouse: 86%; Guinea pig: 85%



[View online »](#)

## Product images:



WB Suggested Anti-PLEKHA4 Antibody Titration:  
0.2-1 ug/ml; ELISA Titer: 1:62500; Positive Control:  
Transfected 293T