

Product datasheet for **TA329449**

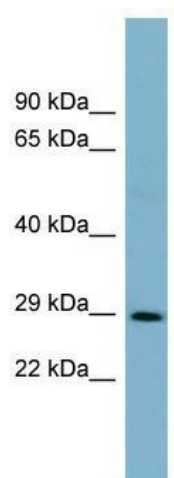
DCUN1D1 Rabbit Polyclonal Antibody

Product data:

Product Type:	Primary Antibodies
Applications:	WB
Recommended Dilution:	WB
Reactivity:	Human
Host:	Rabbit
Isotype:	IgG
Clonality:	Polyclonal
Immunogen:	The immunogen for anti-DCUN1D1 antibody: synthetic peptide directed towards the middle region of human DCUN1D1. Synthetic peptide located within the following region: PKDTWNLILLDFSTMIADDMSNYDEEGAWPVLIDDFVEFARPQIAGTKSTT
Formulation:	Liquid. Purified antibody supplied in 1x PBS buffer with 0.09% (w/v) sodium azide and 2% sucrose. <i>Note that this product is shipped as lyophilized powder to China customers.</i>
Conjugation:	Unconjugated
Storage:	Store at -20°C as received.
Stability:	Stable for 12 months from date of receipt.
Predicted Protein Size:	30 kDa
Gene Name:	defective in cullin neddylation 1 domain containing 1
Database Link:	NP_065691 Entrez Gene 54165 Human Q96GG9
Background:	DCUN1D1 may contribute to neddylation of cullin components of SCF-type E3 ubiquitin ligase complexes. Neddylation of cullins play an essential role in the regulation of SCF-type complexes activity.
Synonyms:	DCNL1; DCUN1L1; RP42; SCCRO; SCRO; Tes3
Note:	Immunogen sequence homology: Dog: 100%; Pig: 100%; Rat: 100%; Horse: 100%; Human: 100%; Mouse: 100%; Bovine: 100%; Rabbit: 100%; Guinea pig: 100%
Protein Families:	Druggable Genome



[View online »](#)

Product images:

WB Suggested Anti-DCUN1D1 Antibody Titration:
0.2-1 ug/ml; ELISA Titer: 1:312500; Positive
Control: PANC1 cell lysate DCUN1D1 is supported
by BioGPS gene expression data to be expressed
in PANC1