

Product datasheet for **TA329448**

FHL1 Rabbit Polyclonal Antibody

Product data:

Product Type:	Primary Antibodies
Applications:	WB
Recommended Dilution:	WB
Reactivity:	Human, Mouse
Host:	Rabbit
Isotype:	IgG
Clonality:	Polyclonal
Immunogen:	The immunogen for anti-FHL1 antibody: synthetic peptide corresponding to a region of Human. Synthetic peptide located within the following region: SKEVHYKNRFWHDTCFRCAKCLHPLANETFVAKDNKILCNKCTTREDSPK
Formulation:	Liquid. Purified antibody supplied in 1x PBS buffer with 0.09% (w/v) sodium azide and 2% sucrose. <i>Note that this product is shipped as lyophilized powder to China customers.</i>
Conjugation:	Unconjugated
Storage:	Store at -20°C as received.
Stability:	Stable for 12 months from date of receipt.
Predicted Protein Size:	32 kDa
Gene Name:	four and a half LIM domains 1
Database Link:	NP_001440 Entrez Gene 14199 Mouse Entrez Gene 2273 Human Q13642
Background:	LIM proteins, named for 'LIN11, ISL1, and MEC3,' are defined by the possession of a highly conserved double zinc finger motif called the LIM domain. FHL1 contains 3 LIM zinc-binding domains. It may have an involvement in muscle development or hypertrophy. LIM proteins, named for 'LIN11, ISL1, and MEC3,' are defined by the possession of a highly conserved double zinc finger motif called the LIM domain. [supplied by OMIM]. Publication Note: This RefSeq record includes a subset of the publications that are available for this gene. Please see the Entrez Gene record to access additional publications.

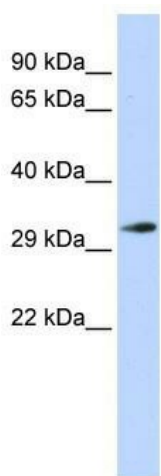


[View online »](#)

Synonyms: FHL-1; FHL1A; FHL1B; FLH1A; KYOT; SLIM; SLIM-1; SLIM1; SLIMMER; XMPMA

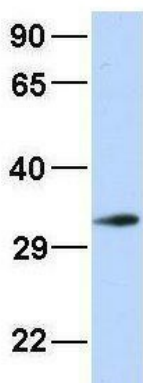
Note: Immunogen sequence homology: Dog: 100%; Pig: 100%; Rat: 100%; Mouse: 100%; Sheep: 100%; Bovine: 100%; Rabbit: 100%; Guinea pig: 100%; Horse: 92%; Human: 92%

Product images:



WB Suggested Anti-FHL1 Antibody Titration: 0.2-1 ug/ml; Positive Control: Human brain

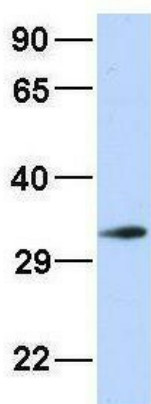
FHL1



Rabbit Anti-FHL1
Sample Type: Human Fetal Brain
Antibody Concentration: 1ug/mL

Host: Rabbit; Target Name: FHL1; Sample Tissue: Human Fetal Brain; Antibody Dilution: 1.0ug/ml

FHL1



Rabbit Anti-FHL1
Sample Type: Human Fetal Brain
Antibody Concentration: 1ug/mL

Host: Rabbit; Target Name: FHL1; Sample Tissue:
Human Fetal Brain; Antibody Dilution: 1.0ug/ml