

## Product datasheet for **TA329447**

### **KLF15 Rabbit Polyclonal Antibody**

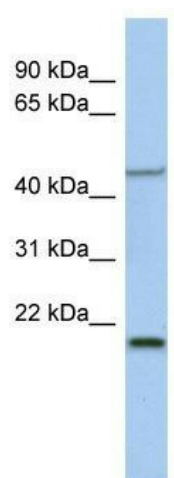
#### **Product data:**

<b>Product Type:</b>	Primary Antibodies
<b>Applications:</b>	WB
<b>Recommended Dilution:</b>	WB
<b>Reactivity:</b>	Human
<b>Host:</b>	Rabbit
<b>Isotype:</b>	IgG
<b>Clonality:</b>	Polyclonal
<b>Immunogen:</b>	The immunogen for anti-KLF15 antibody: synthetic peptide directed towards the middle region of human KLF15. Synthetic peptide located within the following region: GPIPVLLQIQPVPVKQESGTGPASPGQAPENVKVAQLLVNIQGQTFALVP
<b>Formulation:</b>	Liquid. Purified antibody supplied in 1x PBS buffer with 0.09% (w/v) sodium azide and 2% sucrose. <i>Note that this product is shipped as lyophilized powder to China customers.</i>
<b>Conjugation:</b>	Unconjugated
<b>Storage:</b>	Store at -20°C as received.
<b>Stability:</b>	Stable for 12 months from date of receipt.
<b>Predicted Protein Size:</b>	44 kDa
<b>Gene Name:</b>	Kruppel-like factor 15
<b>Database Link:</b>	<a href="#">NP_054798</a> <a href="#">Entrez Gene 28999 Human Q9UIH9</a>
<b>Background:</b>	KLF15 is a Cys2-His2 zinc finger gene. It is found abundantly expressed in the liver, kidneys, heart, and skeletal muscle.
<b>Synonyms:</b>	KKLF
<b>Note:</b>	Immunogen sequence homology: Human: 100%; Rabbit: 100%; Pig: 93%; Mouse: 93%; Guinea pig: 93%; Rat: 92%; Dog: 91%; Horse: 86%
<b>Protein Families:</b>	Transcription Factors



[View online »](#)

## Product images:



WB Suggested Anti-KLF15 Antibody Titration: 0.2-1 ug/ml; ELISA Titer: 1:312500; Positive Control: Human Spleen