

Product datasheet for **TA329446**

OR13C9 Rabbit Polyclonal Antibody

Product data:

Product Type:	Primary Antibodies
Applications:	IHC, WB
Recommended Dilution:	WB, IHC
Reactivity:	Human
Host:	Rabbit
Isotype:	IgG
Clonality:	Polyclonal
Immunogen:	The immunogen for anti-OR13C9 antibody: synthetic peptide directed towards the middle region of human OR13C9. Synthetic peptide located within the following region: IFYGTILFMYMKPKSKETLNSDDL DATDKIISMFGVMTMMPMNPLIYSLR
Formulation:	Liquid. Purified antibody supplied in 1x PBS buffer with 0.09% (w/v) sodium azide and 2% sucrose. <i>Note that this product is shipped as lyophilized powder to China customers.</i>
Conjugation:	Unconjugated
Storage:	Store at -20°C as received.
Stability:	Stable for 12 months from date of receipt.
Predicted Protein Size:	36 kDa
Gene Name:	olfactory receptor family 13 subfamily C member 9
Database Link:	NP_001001956 Entrez Gene 286362 Human Q8NGT0
Background:	Olfactory receptors interact with odorant molecules in the nose, to initiate a neuronal response that triggers the perception of a smell. The olfactory receptor proteins are members of a large family of G-protein-coupled receptors (GPCR) arising from single coding-exon genes. Olfactory receptors share a 7-transmembrane domain structure with many neurotransmitter and hormone receptors and are responsible for the recognition and G protein-mediated transduction of odorant signals.
Synonyms:	OR9-13; OR37L



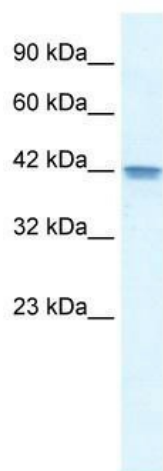
[View online »](#)

Note: Immunogen sequence homology: Human: 100%; Dog: 93%; Horse: 86%; Pig: 79%; Bovine: 79%; Rat: 77%

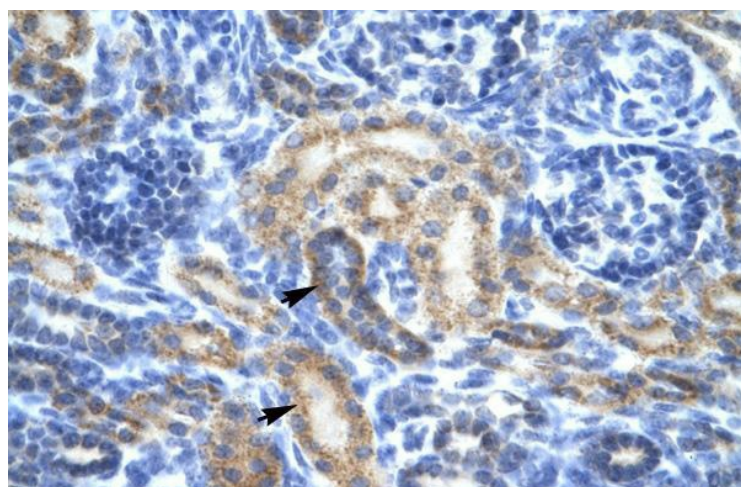
Protein Families: Transmembrane

Protein Pathways: Olfactory transduction

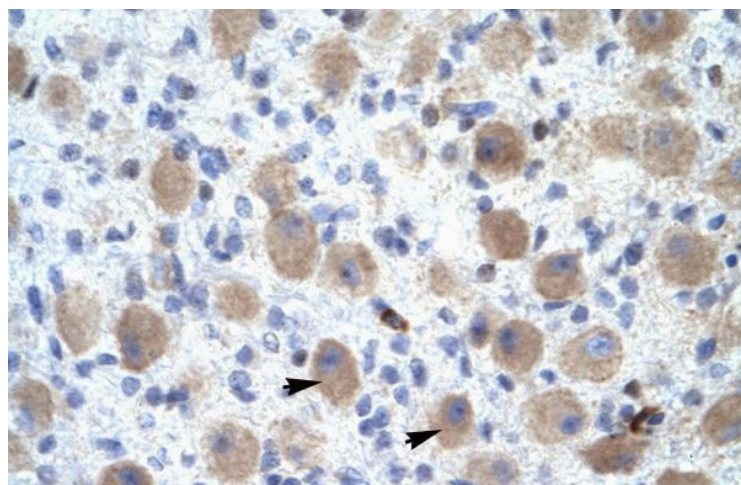
Product images:



WB Suggested Antibody Titration: 0.2-1 ug/ml;
Positive Control: HepG2



Rabbit Anti-OR13C9 Antibody; Paraffin Embedded Tissue: Human Kidney; Cellular Data: Epithelial cells of renal tubule; Antibody Concentration: 4.0-8.0 ug/ml; Magnification: 400X



Rabbit Anti-OR13C9 Antibody; Paraffin Embedded Tissue: Human Brain; Cellular Data: Neural Cells; Antibody Concentration: 4.0-8.0 ug/ml; Magnification: 400X