

Product datasheet for **TA329445**

OR13C9 Rabbit Polyclonal Antibody

Product data:

Product Type:	Primary Antibodies
Applications:	IHC, WB
Recommended Dilution:	IHC, WB
Reactivity:	Human
Host:	Rabbit
Isotype:	IgG
Clonality:	Polyclonal
Immunogen:	The immunogen for anti-OR13C9 antibody: synthetic peptide directed towards the middle region of human OR13C9. Synthetic peptide located within the following region: IFYGTILFMYMKPKSKETLNSDDL DATDKIISMFGVMT PMMNPLIYSLR
Formulation:	Liquid. Purified antibody supplied in 1x PBS buffer with 0.09% (w/v) sodium azide and 2% sucrose. <i>Note that this product is shipped as lyophilized powder to China customers.</i>
Conjugation:	Unconjugated
Storage:	Store at -20°C as received.
Stability:	Stable for 12 months from date of receipt.
Predicted Protein Size:	36 kDa
Gene Name:	olfactory receptor family 13 subfamily C member 9
Database Link:	NP_001001956 Entrez Gene 286362 Human Q8NGT0
Background:	Olfactory receptors interact with odorant molecules in the nose, to initiate a neuronal response that triggers the perception of a smell. The olfactory receptor proteins are members of a large family of G-protein-coupled receptors (GPCR) arising from single coding-exon genes. Olfactory receptors share a 7-transmembrane domain structure with many neurotransmitter and hormone receptors and are responsible for the recognition and G protein-mediated transduction of odorant signals. The olfactory receptor gene family is the largest in the genome. The nomenclature assigned to the olfactory receptor genes and proteins for this organism is independent of other organisms.



[View online »](#)

Synonyms: OR9-13; OR37L

Note: Immunogen sequence homology: Human: 100%; Dog: 93%; Horse: 86%; Pig: 79%; Bovine: 79%; Rat: 77%

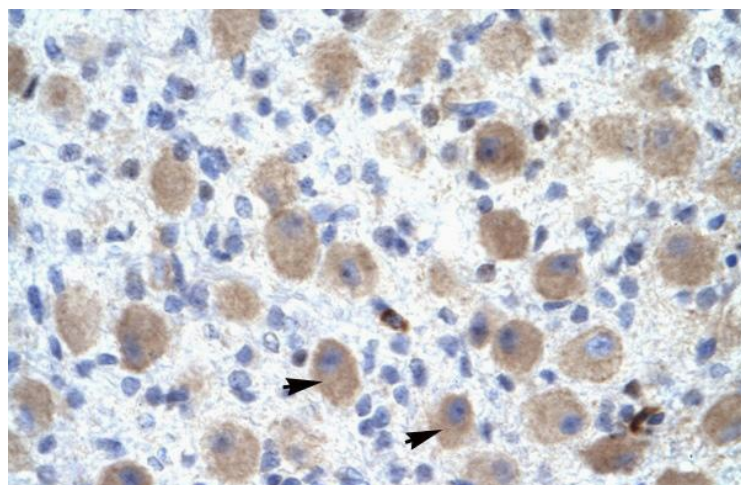
Protein Families: Transmembrane

Protein Pathways: Olfactory transduction

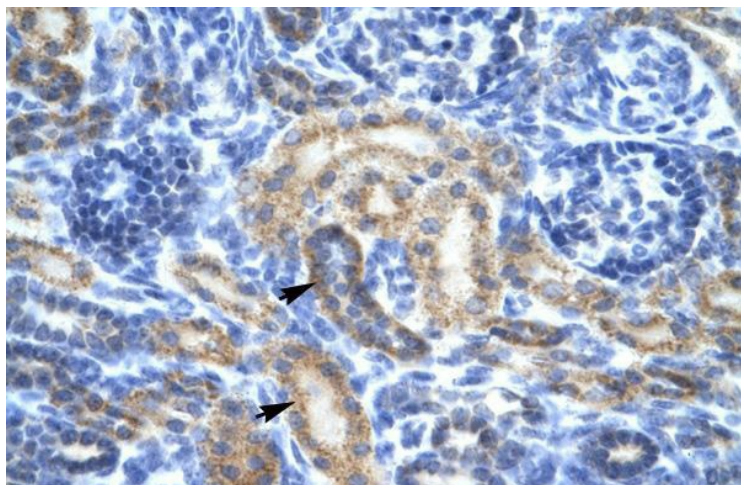
Product images:



WB Suggested Anti-OR13C9 Antibody Titration: 0.2-1 ug/ml; ELISA Titer: 1:312500; Positive Control: HepG2 cell lysate



Rabbit Anti-OR13C9 Antibody; Paraffin Embedded Tissue: Human Brain; Cellular Data: Neural Cells; Antibody Concentration: 4.0-8.0 ug/ml; Magnification: 400X



Rabbit Anti-OR13C9 Antibody; Paraffin Embedded Tissue: Human Kidney; Cellular Data: Epithelial cells of renal tubule; Antibody Concentration: 4.0-8.0 ug/ml; Magnification: 400X