

Product datasheet for **TA329442**

ZNF326 Rabbit Polyclonal Antibody

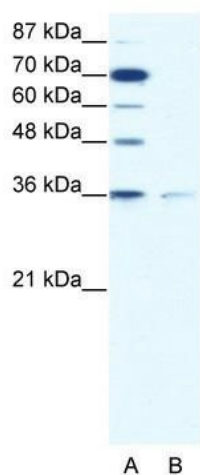
Product data:

Product Type:	Primary Antibodies
Applications:	WB
Recommended Dilution:	WB
Reactivity:	Human
Host:	Rabbit
Isotype:	IgG
Clonality:	Polyclonal
Immunogen:	The immunogen for anti-ZNF326 antibody: synthetic peptide directed towards the C terminal of human ZNF326. Synthetic peptide located within the following region: ENPFQIQDHSQDQIQIEGDEEDEEKIDPEIEEEEEDEEEEEAEVGEVEEV
Formulation:	Liquid. Purified antibody supplied in 1x PBS buffer with 0.09% (w/v) sodium azide and 2% sucrose.
Conjugation:	Unconjugated
Storage:	Store at -20°C as received.
Stability:	Stable for 12 months from date of receipt.
Predicted Protein Size:	43 kDa
Gene Name:	zinc finger protein 326
Database Link:	NP_861446 Entrez Gene 284695 Human Q5BKZ1
Background:	ZNF326 is a candidate transcription factor
Synonyms:	dj871E2.1; ZAN75; Zfp326; ZIRD
Note:	Immunogen sequence homology: Dog: 100%; Human: 100%; Bovine: 100%; Pig: 92%; Rat: 92%; Horse: 92%; Mouse: 92%; Rabbit: 92%; Guinea pig: 92%
Protein Families:	Transcription Factors



[View online »](#)

Product images:



WB Suggested Anti-ZNF326 Antibody Titration:
1.25ug/ml; ELISA Titer: 1:312500; Positive Control:
HepG2 cell lysate