

Product datasheet for **TA329439**

C13orf8 (CHAMP1) Rabbit Polyclonal Antibody

Product data:

Product Type:	Primary Antibodies
Applications:	IHC, WB
Recommended Dilution:	WB, IHC
Reactivity:	Human
Host:	Rabbit
Isotype:	IgG
Clonality:	Polyclonal
Immunogen:	The immunogen for anti-C13ORF8 antibody: synthetic peptide directed towards the middle region of human C13ORF8. Synthetic peptide located within the following region: PAASPESRKSARTTSPEPRKPSPSESPWPFPVSPVSPRRPAPVSPG
Formulation:	Liquid. Purified antibody supplied in 1x PBS buffer with 0.09% (w/v) sodium azide and 2% sucrose. <i>Note that this product is shipped as lyophilized powder to China customers.</i>
Conjugation:	Unconjugated
Storage:	Store at -20°C as received.
Stability:	Stable for 12 months from date of receipt.
Predicted Protein Size:	89 kDa
Gene Name:	chromosome alignment maintaining phosphoprotein 1
Database Link:	NP_115812 Entrez Gene 283489 Human Q96JM3
Background:	The function of the C13orf8 gene has not yet been determined.
Synonyms:	C13orf8; CAMP; CHAMP; ZNF828
Note:	Immunogen sequence homology: Horse: 100%; Human: 100%; Dog: 93%; Rat: 93%; Rabbit: 93%; Pig: 86%; Mouse: 86%

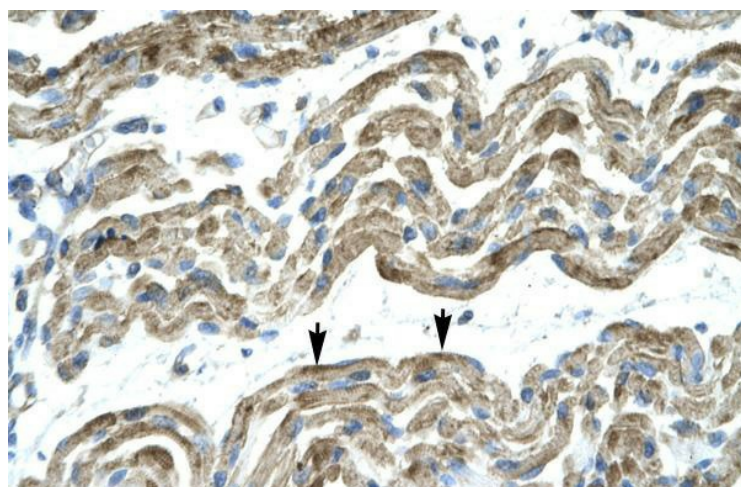


[View online »](#)

Product images:



WB Suggested Anti-C13ORF8 Antibody Titration: 1.0ug/ml; ELISA Titer: 1:62500; Positive Control: Daudi cell lysate APOBEC3G is strongly supported by BioGPS gene expression data to be expressed in Human Daudi cells



Human Muscle