

Product datasheet for **TA329438**

Mohawk homeobox (MKX) Rabbit Polyclonal Antibody

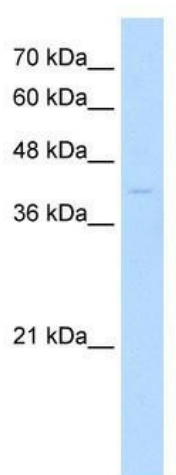
Product data:

Product Type:	Primary Antibodies
Applications:	WB
Recommended Dilution:	WB
Reactivity:	Human
Host:	Rabbit
Isotype:	IgG
Clonality:	Polyclonal
Immunogen:	The immunogen for anti-MKX antibody: synthetic peptide directed towards the middle region of human MKX. Synthetic peptide located within the following region: KYKSSLLNRYLNDSLRHVMATNTTMMGKTRQRNHSFGSFSNEFEELVSP
Formulation:	Liquid. Purified antibody supplied in 1x PBS buffer with 0.09% (w/v) sodium azide and 2% sucrose. <i>Note that this product is shipped as lyophilized powder to China customers.</i>
Conjugation:	Unconjugated
Storage:	Store at -20°C as received.
Stability:	Stable for 12 months from date of receipt.
Predicted Protein Size:	39 kDa
Gene Name:	mohawk homeobox
Database Link:	NP_775847 Entrez Gene 283078 Human Q8IYA7
Background:	MKX is a member of the TALE superclass of atypical homeobox genes that is most closely related to the Iroquois class.
Synonyms:	C10orf48; IFRX; IRXL1
Note:	Immunogen sequence homology: Dog: 100%; Pig: 100%; Rat: 100%; Horse: 100%; Human: 100%; Bovine: 100%; Rabbit: 100%; Guinea pig: 100%; Mouse: 93%; Zebrafish: 91%
Protein Families:	Transcription Factors



[View online »](#)

Product images:



WB Suggested Anti-MKX Antibody Titration: 0.2-1 ug/ml; ELISA Titer: 1:62500; Positive Control: Jurkat cell lysate