

Product datasheet for **TA329437**

GLI2 Rabbit Polyclonal Antibody

Product data:

Product Type:	Primary Antibodies
Applications:	IHC, WB
Recommended Dilution:	WB, IHC
Reactivity:	Human, Mouse
Host:	Rabbit
Isotype:	IgG
Clonality:	Polyclonal
Immunogen:	The immunogen for anti-GLI2 antibody: synthetic peptide directed towards the N terminal of human GLI2. Synthetic peptide located within the following region: RNDVHLRTPLLKENGDSEAGTEPGGPESTEASSTSQAVEDCLHVRAIKTE
Formulation:	Liquid. Purified antibody supplied in 1x PBS buffer with 0.09% (w/v) sodium azide and 2% sucrose. <i>Note that this product is shipped as lyophilized powder to China customers.</i>
Conjugation:	Unconjugated
Storage:	Store at -20°C as received.
Stability:	Stable for 12 months from date of receipt.
Predicted Protein Size:	133 kDa
Gene Name:	GLI family zinc finger 2
Database Link:	NP_084655 Entrez Gene 14633 Mouse Entrez Gene 2736 Human P10070



[View online »](#)

Background: GLI2 encodes a protein which belongs to the C2H2-type zinc finger protein subclass of the Gli family. Members of this subclass are characterized as transcription factors which bind DNA through zinc finger motifs. These motifs contain conserved H-C links. Gli family zinc finger proteins are mediators of Sonic hedgehog (Shh) signaling and they are implicated as potent oncogenes in the embryonal carcinoma cell. The protein encoded by this gene localizes to the cytoplasm and activates patched Drosophila homolog (PTCH) gene expression. It is also thought to play a role during embryogenesis. The encoded protein is associated with several phenotypes- Greig cephalopolysyndactyly syndrome, Pallister-Hall syndrome, preaxial polydactyly type IV, postaxial polydactyly types A1 and B.

Synonyms: GLI-Kruppel family member GLI2; HPE9; oncogene GLI2; tax-responsive element-2 holding protein; tax-responsive element-25-bp sequence binding protein; tax helper protein 1; tax helper protein 2; THP1; THP2; zinc finger protein GLI2

Note: Immunogen sequence homology: Human: 100%

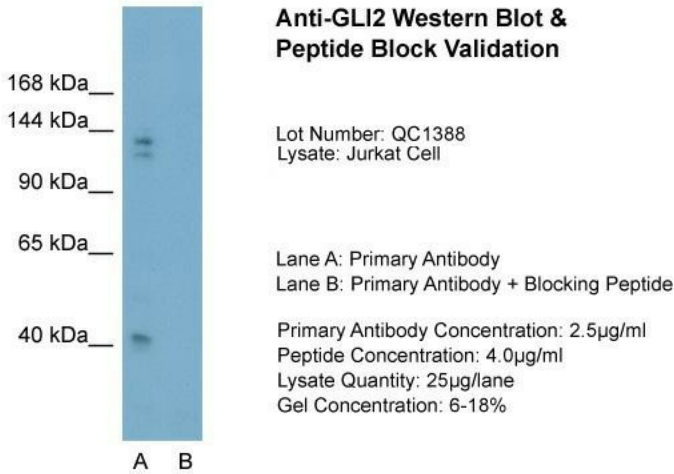
Protein Families: Adult stem cells, Cancer stem cells, Druggable Genome, Embryonic stem cells, ES Cell Differentiation/IPS

Protein Pathways: Basal cell carcinoma, Hedgehog signaling pathway, Pathways in cancer

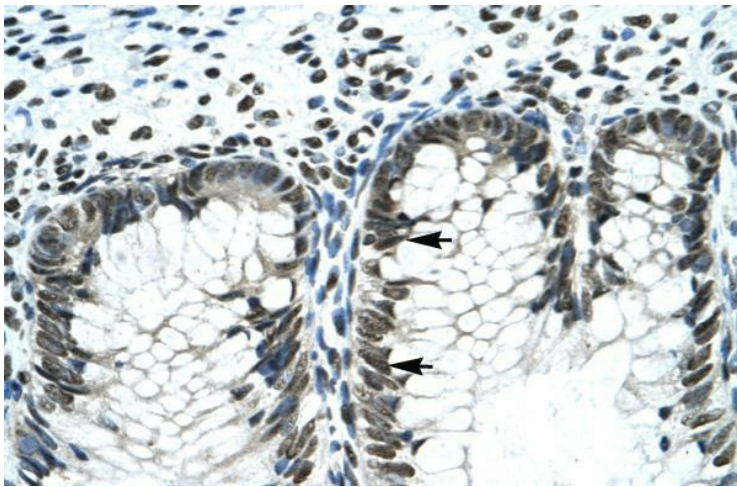
Product images:



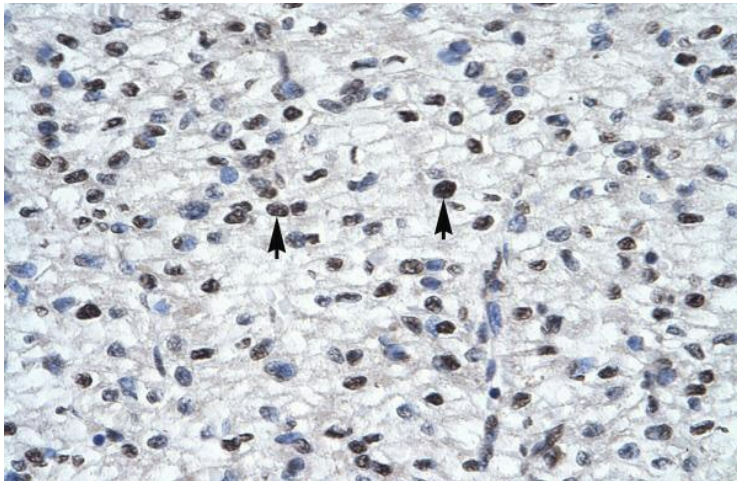
Host: Rabbit; Target Name: GLI2; Sample Tissue: HepG2 Whole Cell lysates; Antibody Dilution: 1.0ug/ml



Host: Rabbit; Target Name: GLI2; Sample Tissue: Jurkat; Lane A: Primary Antibody; Lane B: Primary Antibody + Blocking Peptide ; Primary Antibody Concentration:2.5ug/mL; Peptide Concentration: 4.0ug/mL; Lysate Quantity: 25ug/lane; Gel Concentration: 6%-18%

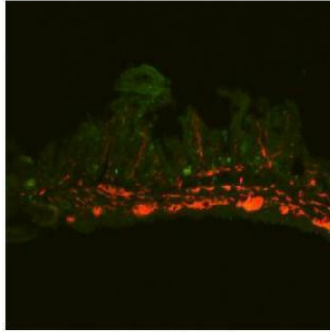


Rabbit Anti-GLI2 Antibody; Paraffin Embedded Tissue: Human Intestine; Cellular Data: Epithelial cells of intestinal gland; Antibody Concentration: 4.0-8.0 ug/ml; Magnification: 400X



Rabbit Anti-GLI2 Antibody; Paraffin Embedded Tissue: Human Heart; Cellular Data: Myocardial cells; Antibody Concentration: 4.0-8.0 ug/ml; Magnification: 400X

GLI2



Green: GLI2 antibody
Red: Neural crest cells

Sample Type : Mouse Gut Tissue TgWnt1-Cre/+
Ednrbflex3/+ Rosa26YFPStop/YFPStopPrimary
Antibody Dilution : 1:50Secondary Antibody :
Goat anti-rabbit-cy3Secondary Antibody Dilution :
1:1500Color/Signal Descriptions : GLI2: Green
Neural crest cells:: RedGene Name :
GLI2Submitted by : Anonymous

[See IHC 3 Data and Customer Feedback for more information](#)