

## Product datasheet for **TA329435**

### Aff4 Rabbit Polyclonal Antibody

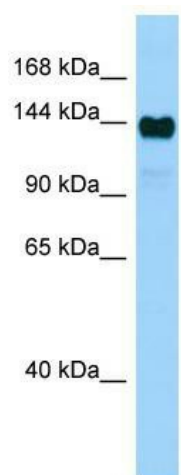
#### Product data:

Product Type:	Primary Antibodies
Applications:	WB
Recommended Dilution:	WB
Reactivity:	Rat
Host:	Rabbit
Isotype:	IgG
Clonality:	Polyclonal
Immunogen:	The immunogen for Anti-Aff4 antibody is: synthetic peptide directed towards the middle region of Rat Aff4. Synthetic peptide located within the following region: GKRKHKNDNRRASESKKPKTEDKNSSAHKPKSSSKESSKQSSTKEKDLLP
Formulation:	Liquid. Purified antibody supplied in 1x PBS buffer with 0.09% (w/v) sodium azide and 2% sucrose. <i>Note that this product is shipped as lyophilized powder to China customers.</i>
Conjugation:	Unconjugated
Storage:	Store at -20°C as received.
Stability:	Stable for 12 months from date of receipt.
Predicted Protein Size:	126 kDa
Gene Name:	AF4/FMR2 family, member 4
Database Link:	<a href="#">NP_001100471</a> <a href="#">Entrez Gene 303132 Rat</a>
Background:	Aff4 is a protein kinase involved in the regulation of transcription.
Synonyms:	AF5Q31; MCEF; MGC75036
Note:	Immunogen sequence homology: Pig: 100%; Rat: 100%; Human: 100%; Guinea pig: 100%; Horse: 93%; Bovine: 93%; Dog: 86%; Mouse: 86%; Rabbit: 86%



[View online »](#)

## Product images:



WB Suggested Anti-Aff4 Antibody; Titration: 1.0 ug/ml; Positive Control: Rat Small Intestine