

Product datasheet for **TA329432**

GF11 Rabbit Polyclonal Antibody

Product data:

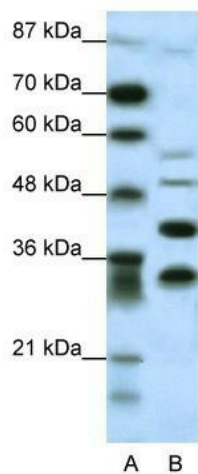
Product Type:	Primary Antibodies
Applications:	WB
Recommended Dilution:	WB
Reactivity:	Human, Mouse
Host:	Rabbit
Isotype:	IgG
Clonality:	Polyclonal
Immunogen:	The immunogen for anti-GF11 antibody: synthetic peptide directed towards the N terminal of human GF11. Synthetic peptide located within the following region: MPRSFLVKSKKAHSYHQPRSPGPDYSLRLENVPAPSRADSTSNAGGAKAE
Formulation:	Liquid. Purified antibody supplied in 1x PBS buffer with 0.09% (w/v) sodium azide and 2% sucrose. <i>Note that this product is shipped as lyophilized powder to China customers.</i>
Conjugation:	Unconjugated
Storage:	Store at -20°C as received.
Stability:	Stable for 12 months from date of receipt.
Predicted Protein Size:	46 kDa
Gene Name:	growth factor independent 1 transcriptional repressor
Database Link:	NP_005254 Entrez Gene 14581 Mouse Entrez Gene 2672 Human Q99684
Background:	GF11 may be a transcription factor involved in regulating the expression of genes active in the S phase during cell cycle progression in T-cells. GF11 may be involved in tumor progression. Defects in GF11 are a cause of autosomal dominant severe congenital neutropenia (SCN) and dominant nonimmune chronic idiopathic neutropenia of adults (NI-CINA)
Synonyms:	GF1-1; GF11A; SCN2; ZNF163
Note:	Immunogen sequence homology: Dog: 100%; Pig: 100%; Rat: 100%; Horse: 100%; Human: 100%; Mouse: 100%; Bovine: 100%; Rabbit: 100%; Guinea pig: 100%



[View online »](#)

Protein Families: Druggable Genome, Transcription Factors

Product images:



WB Suggested Anti-GF11 Antibody Titration: 0.2-1 ug/ml; ELISA Titer: 1:312500; Positive Control: HepG2 cell lysate