

Product datasheet for **TA329431**

AATF Rabbit Polyclonal Antibody

Product data:

Product Type:	Primary Antibodies
Applications:	IHC, WB
Recommended Dilution:	WB, IHC
Reactivity:	Human
Host:	Rabbit
Isotype:	IgG
Clonality:	Polyclonal
Immunogen:	The immunogen for anti-AATF antibody: synthetic peptide directed towards the N terminal of human AATF. Synthetic peptide located within the following region: EEEEDEESGMEEGDDAEDSQGESEEDRAGDRNSEDDGVMTFSSVKVSEE
Formulation:	Liquid. Purified antibody supplied in 1x PBS buffer with 0.09% (w/v) sodium azide and 2% sucrose. <i>Note that this product is shipped as lyophilized powder to China customers.</i>
Conjugation:	Unconjugated
Storage:	Store at -20°C as received.
Stability:	Stable for 12 months from date of receipt.
Predicted Protein Size:	63 kDa
Gene Name:	apoptosis antagonizing transcription factor
Database Link:	NP_036270 Entrez Gene 26574 Human Q9NY61
Background:	The AATF gene encodes a protein that was identified on the basis of its interaction with MAP3K12/DLK, a protein kinase known to be involved in the induction of cell apoptosis. This gene product contains a leucine zipper, which is a characteristic motif of transcription factors, and was shown to exhibit strong transactivation activity when fused to Gal4 DNA binding domain. Overexpression of this gene interfered with MAP3K12 induced apoptosis.
Synonyms:	BFR2; CHE-1; CHE1; DED

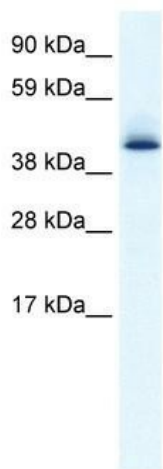


[View online »](#)

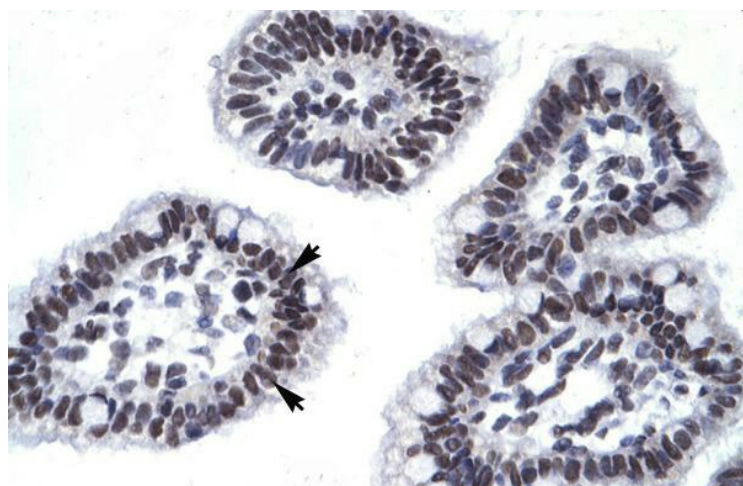
Note: Immunogen sequence homology: Human: 100%; Rabbit: 100%; Rat: 90%; Yeast: 90%; Horse: 85%; Dog: 77%; Mouse: 77%

Protein Families: Druggable Genome, Stem cell - Pluripotency, Transcription Factors

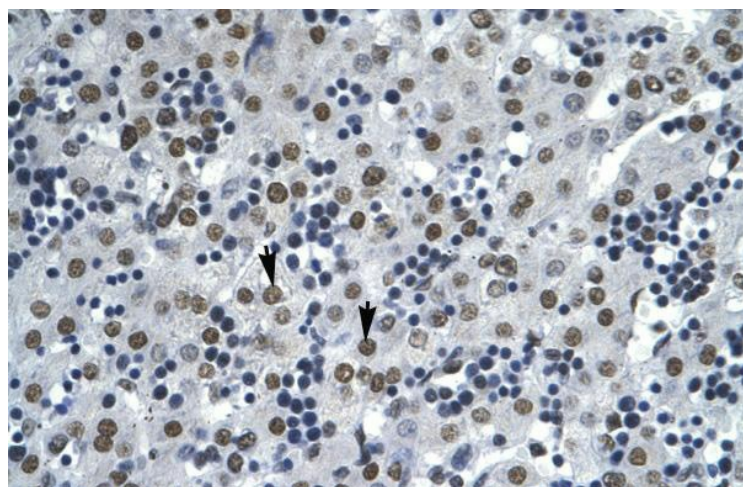
Product images:



WB Suggested Anti-AATF Antibody Titration: 0.2-1 ug/ml; ELISA Titer: 1:12500; Positive Control: Human kidney



Human Intestine



Human Liver