

Product datasheet for **TA329430**

Hey L (HEYL) Rabbit Polyclonal Antibody

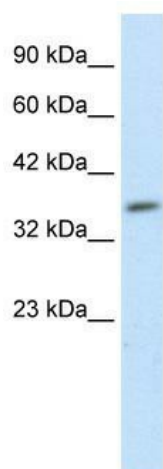
Product data:

| | |
|-------------------------|---|
| Product Type: | Primary Antibodies |
| Applications: | WB |
| Recommended Dilution: | WB |
| Reactivity: | Human |
| Host: | Rabbit |
| Isotype: | IgG |
| Clonality: | Polyclonal |
| Immunogen: | The immunogen for anti-HEYL antibody: synthetic peptide directed towards the N terminal of human HEYL. Synthetic peptide located within the following region: MKRPKEPSGSDGESDGPIDVQGQELSQMARPLSTPSSSQMQARKRRGI |
| Formulation: | Liquid. Purified antibody supplied in 1x PBS buffer with 0.09% (w/v) sodium azide and 2% sucrose. <i>Note that this product is shipped as lyophilized powder to China customers.</i> |
| Conjugation: | Unconjugated |
| Storage: | Store at -20°C as received. |
| Stability: | Stable for 12 months from date of receipt. |
| Predicted Protein Size: | 35 kDa |
| Gene Name: | hes related family bHLH transcription factor with YRPW motif-like |
| Database Link: | NP_055386 Entrez Gene 26508 Human Q9NQ87 |
| Background: | HEYL belongs to hairy-related bHLH transcription factor family. HEY genes are candidates for several human or mouse disease loci. |
| Synonyms: | bHLHb33; HESR3; HEY3; HRT3 |
| Note: | Immunogen sequence homology: Pig: 100%; Rat: 100%; Human: 100%; Mouse: 100%; Guinea pig: 100%; Dog: 92%; Bovine: 92%; Horse: 85% |
| Protein Families: | Druggable Genome, Transcription Factors |



[View online »](#)

Product images:



WB Suggested Anti-HEYL Antibody Titration: 1.0 ug/ml; ELISA Titer: 1:312500; Positive Control: Human Muscle