

Product datasheet for **TA329429**

GBX2 Rabbit Polyclonal Antibody

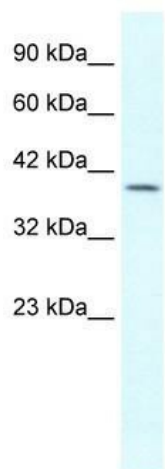
Product data:

Product Type:	Primary Antibodies
Applications:	WB
Recommended Dilution:	WB
Reactivity:	Human
Host:	Rabbit
Isotype:	IgG
Clonality:	Polyclonal
Immunogen:	The immunogen for anti-GBX2 antibody: synthetic peptide directed towards the middle region of human GBX2. Synthetic peptide located within the following region: QGKDESKVEDDPKGKEESFSLESDVDYSSDDNLTGQAAHKEEDPGHALEE
Formulation:	Liquid. Purified antibody supplied in 1x PBS buffer with 0.09% (w/v) sodium azide and 2% sucrose. <i>Note that this product is shipped as lyophilized powder to China customers.</i>
Conjugation:	Unconjugated
Storage:	Store at -20°C as received.
Stability:	Stable for 12 months from date of receipt.
Predicted Protein Size:	37 kDa
Gene Name:	gastrulation brain homeobox 2
Database Link:	NP_001476 Entrez Gene 2637 Human P52951
Background:	Altered expression of GBX2, part of the homeobox-containing human family of DNA-binding transcription factors, is associated with therapy failure and death in patients with multiple types of cancer.
Synonyms:	gastrulation brain homeo box 2; gastrulation brain homeobox 2
Note:	Immunogen sequence homology: Dog: 100%; Pig: 100%; Rat: 100%; Horse: 100%; Human: 100%; Bovine: 100%; Rabbit: 100%; Guinea pig: 92%; Mouse: 85%



[View online »](#)

Product images:



WB Suggested Anti-GBX2 Antibody Titration: 1.25 ug/ml; ELISA Titer: 1:62500; Positive Control: Jurkat cell lysate