

Product datasheet for TA329428

EHF Rabbit Polyclonal Antibody

Product data:

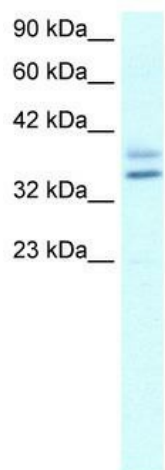
Product Type:	Primary Antibodies
Applications:	IHC, WB
Recommended Dilution:	WB, IHC
Reactivity:	Human
Host:	Rabbit
Isotype:	IgG
Clonality:	Polyclonal
Immunogen:	The immunogen for anti-EHF antibody: synthetic peptide directed towards the N terminal of human EHF. Synthetic peptide located within the following region: RAAGTAGQLLYSNLQHLKWNGQCSSDLFQSTHNVIVKTEQTEPSIMNTWK
Formulation:	Liquid. Purified antibody supplied in 1x PBS buffer with 0.09% (w/v) sodium azide and 2% sucrose. <i>Note that this product is shipped as lyophilized powder to China customers.</i>
Conjugation:	Unconjugated
Storage:	Store at -20°C as received.
Stability:	Stable for 12 months from date of receipt.
Predicted Protein Size:	35 kDa
Gene Name:	ETS homologous factor
Database Link:	NP_036285 Entrez Gene 26298 Human Q9NZC4
Background:	EHF belongs to an ETS transcription factor subfamily characterized by epithelial-specific expression (ESEs). The encoded protein acts as a transcriptional repressor and may be associated with asthma susceptibility. This protein may be involved in epithelial differentiation and carcinogenesis.
Synonyms:	ESE3; ESE3B; ESEJ
Note:	Immunogen sequence homology: Dog: 100%; Pig: 100%; Rat: 100%; Horse: 100%; Human: 100%; Sheep: 100%; Bovine: 100%; Rabbit: 100%; Mouse: 92%; Guinea pig: 92%



[View online »](#)

Protein Families: Transcription Factors

Product images:



WB Suggested Anti-EHF Antibody Titration: 1.25 ug/ml; ELISA Titer: 1:62500; Positive Control: Jurkat cell lysate

