

Product datasheet for TA329425

GATA6 Rabbit Polyclonal Antibody

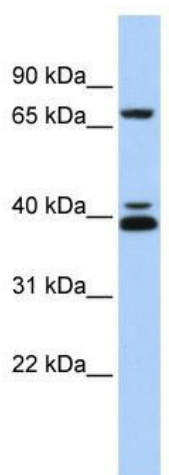
Product data:

Product Type:	Primary Antibodies
Applications:	IF, IHC, WB
Recommended Dilution:	WB, IF, IHC
Reactivity:	Human
Host:	Rabbit
Isotype:	IgG
Clonality:	Polyclonal
Immunogen:	The immunogen for anti-GATA6 antibody: synthetic peptide directed towards the middle region of human GATA6. Synthetic peptide located within the following region: SGAGAPVMTGAGESTNPENSELKYSGDGLYIGVSLASPAEVTSSVRPDS
Formulation:	Liquid. Purified antibody supplied in 1x PBS buffer with 0.09% (w/v) sodium azide and 2% sucrose. <i>Note that this product is shipped as lyophilized powder to China customers.</i>
Conjugation:	Unconjugated
Storage:	Store at -20°C as received.
Stability:	Stable for 12 months from date of receipt.
Predicted Protein Size:	60 kDa
Gene Name:	GATA binding protein 6
Database Link:	NP_005248 Entrez Gene 2627 Human Q92908
Background:	GATA6 is thought to be important for regulating terminal differentiation and/or proliferation.
Synonyms:	GATA-binding protein 6; GATA binding protein 6; transcription factor GATA-6
Note:	Immunogen sequence homology: Horse: 100%; Human: 100%; Pig: 93%; Sheep: 93%; Rabbit: 93%; Rat: 86%; Bovine: 86%; Guinea pig: 85%; Mouse: 79%
Protein Families:	Embryonic stem cells, ES Cell Differentiation/IPS, Transcription Factors

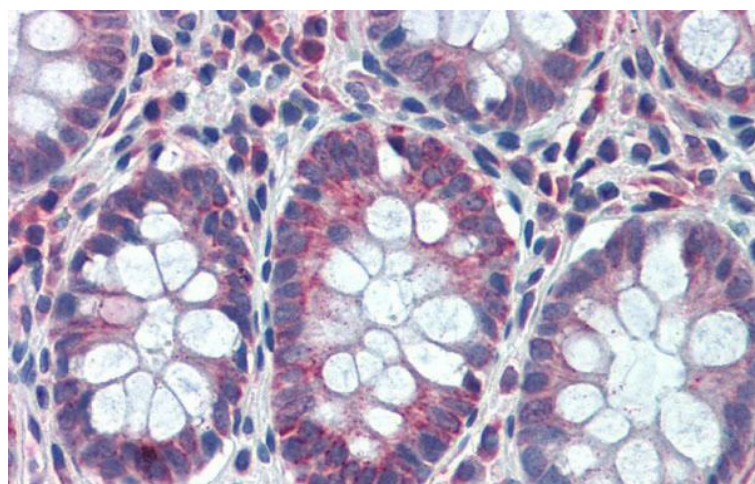


[View online »](#)

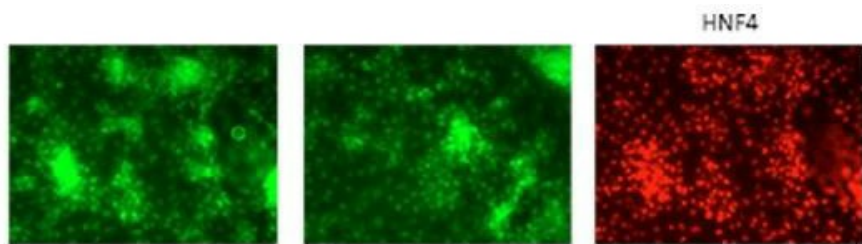
Product images:



WB Suggested Anti-GATA6 Antibody Titration: 0.2-1 ug/ml; ELISA Titer: 1:312500; Positive Control: MCF7 cell lysate



Rabbit Anti-GATA6 Antibody; Paraffin Embedded Tissue: Human Colon; Antibody Concentration: 5 ug/ml



The cells are human embryonic stem cell line H1 differentiated to HNF4 positive hepatic progenitor cells. The antibodies were used at a 1:250 dilution.