

Product datasheet for **TA329424**

GATA3 Rabbit Polyclonal Antibody

Product data:

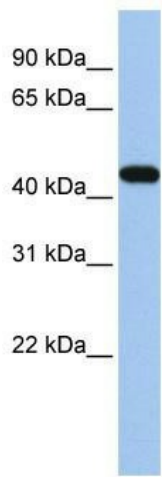
Product Type:	Primary Antibodies
Applications:	IHC, WB
Recommended Dilution:	WB, IHC
Reactivity:	Human
Host:	Rabbit
Isotype:	IgG
Clonality:	Polyclonal
Immunogen:	The immunogen for anti-GATA3 antibody: synthetic peptide directed towards the N terminal of human GATA3. Synthetic peptide located within the following region: MDAAQYPLPEEVDVLFNIDGQGNHVPPYYGNSVRATVQRYPPTHHGSQVC
Formulation:	Liquid. Purified antibody supplied in 1x PBS buffer with 0.09% (w/v) sodium azide and 2% sucrose. <i>Note that this product is shipped as lyophilized powder to China customers.</i>
Conjugation:	Unconjugated
Storage:	Store at -20°C as received.
Stability:	Stable for 12 months from date of receipt.
Predicted Protein Size:	48 kDa
Gene Name:	GATA binding protein 3
Database Link:	NP_002042 Entrez Gene 2625 Human P23771
Background:	GATA3 is crucially involved in IL-5 gene transcription in human peripheral CD4-positive t cells. This gene is involved in growth control and the maintenance of the differentiated state in epithelial cells and may contribute to tumorigenesis in breast cancer.
Synonyms:	HDR; HDRS
Note:	Immunogen sequence homology: Dog: 100%; Pig: 100%; Rat: 100%; Horse: 100%; Human: 100%; Mouse: 100%; Sheep: 100%; Bovine: 100%; Rabbit: 100%; Guinea pig: 92%; Zebrafish: 85%



[View online »](#)

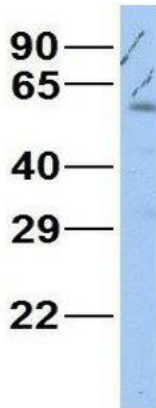
Protein Families: Adult stem cells, ES Cell Differentiation/IPS, Stem cell relevant signaling - JAK/STAT signaling pathway, Transcription Factors

Product images:



WB Suggested Anti-GATA3 Antibody Titration: 0.2-1 ug/ml; ELISA Titer: 1:1562500; Positive Control: MCF7 cell lysate

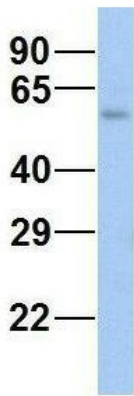
GATA3



Rabbit Anti-GATA3
 Sample Type: Human Fetal Heart
 Antibody Concentration: 1ug/mL

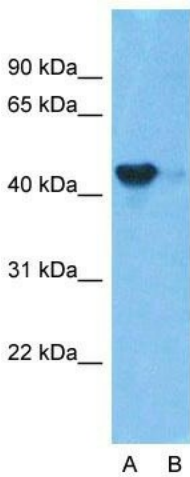
Host: Rabbit; Target Name: GATA3; Sample Tissue: Human Fetal Heart; Antibody Dilution: 1.0ug/ml

GATA3



Rabbit Anti-GATA3
 Sample Type: Human Fetal Lung
 Antibody Concentration: 1ug/mL

Host: Rabbit; Target Name: GATA3; Sample Tissue: Human Fetal Lung; Antibody Dilution: 1.0ug/ml

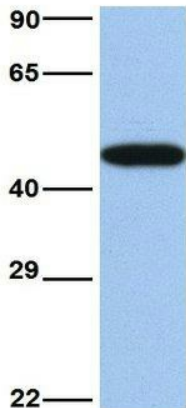


Anti-GATA3 Western Blot & Peptide Block Validation

Lot Number: QC1366
 Lysate: MCF7 Cell
 Lane A: Primary Antibody
 Lane B: Primary Antibody + Blocking Peptide
 Primary Antibody Concentration: 1.0µg/ml
 Peptide Concentration: 5.0µg/ml
 Lysate Quantity: 25µg/lane
 Gel Concentration: 12%

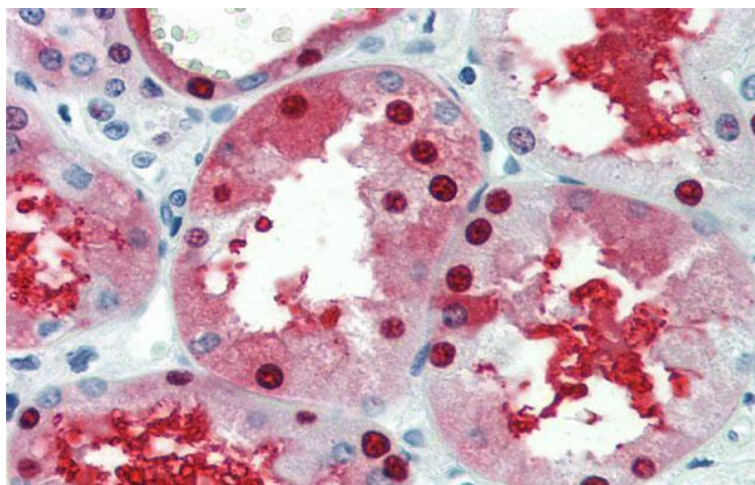
Host: Rabbit; Target Name: GATA3; Sample Tissue: MCF7; Lane A: Primary Antibody; Lane B: Primary Antibody + Blocking Peptide ; Primary Antibody Concentration:1ug/ml; Peptide Concentration: 5.0 ug/ml; Lysate Quantity: 25ug/lane/lane; Gel Concentration: 12%

GATA3



Rabbit Anti-GATA3
 Sample Type: Human MCF7
 Antibody Concentration: 1ug/mL

Host: Rabbit; Target Name: GATA3; Sample Tissue: MCF7; Antibody Dilution: 1.0ug/ml; GATA3 is strongly supported by BioGPS gene expression data to be expressed in Human MCF7 cells



Immunohistochemistry with Human kidney lysate tissue at an antibody concentration of 5.0ug/ml using anti-GATA3 antibody